



M/V Cade Candies

M/V Cade Candies

GENERAL

IMO No9518957
Owner/Manager.....Otto Candies, LLC
Classification and Flag.....U.S. Flag – Jones Act Compliant
Vessel PurposeService Operations Vessel (SOV)
DesignCandies Shipbuilders
Year Built.....2010
Place Built.....Anacortes, WA
Builder.....Dakota Creek
Class Society.....Lloyd's Register
Class Notation.....USCG, , ✕100A1, LMC, 1NA1, LMC, DP AA, ES
(Clisan Dosing), UWILD, General Caro, MARPOL,
SOLAS, IMO
Port Of Registry.....New Orleans, La
Home Port In GOM..... Port Fourchon, LA

MAIN DIMENSIONS

Length O.A...94.30m / 309ft
Length waterline89.55m / 294ft
Breath molded.....20.0m / 66ft
Depth molded.....8.60m / 28ft
Design draught.....6.00m / 20ft
Scantling draught.....7.10m / 23ft
Working draft.....6.4m / 21ft
Moonpool l.....The vessel is outfitted with a moon pool of 25' long
x 23' wide, clear opening with bottom open door.

TONNAGE

Gross tonnage.....5,289 GT ITC
Net tonnage.....1,586 NT ITC
Deadweight.....6,428.6t DWT

PERFORMANCE

Service speed.....10 knots
Maximum speed.....14.5 knots
Fuel consumption at max. speed.....18.17m³ day / 4,800 gal day
Fuel consumption at service speed.....15.14m³ day/ 4,000 gal day
Fuel consumption on DP.....8.33m³ day / 2,200 gal day

MAIN ENGINES AND PROPULSION (A/C Electric Propulsion)

Main Engines.....4 x 3516C Cat – 2350kW each
Tunnel Thrusters.....3 x 910 kW STT 3FP (Schottel)
Stern Thrusters.....2 x 2,500kW Combi Drive (Schottel)

CAPABILITIES

Cargo Deck.....(1,151m²) 12,395 ft²
Deck strength.....10 tons between frame 46-67

TANK CAPACITY

Fuel oil.....1650m³ / 435,883 gal
Ballast water.....3524m³ / 923,288 gal
Fresh water.....359m³ / 94,058 gal
FW generation.....19m³ day / 5,000 gal. day



M/V Cade Candies

DECK CRANE

Crane.....Huisman Model: KBC 6200
Crane Description.....150 Ton Knuckle Boom Crane
Main Crane Offshore Rating.....150 Ton With 3,300m Cable
Main Crane Maximum Wire Length.....3,300m
Main Crane Maximum Boom Height....40m
Deck Tuggers.....(2) 5ton Tuggers On Main Crane
Electrical Power To Deck.....Yes
Air Power To Deck.....Yes

NAVIGATION EQUIPMENT

Furuno GMDSS Model 1815
Furuno FAR2137S/12 S-Band Radar
Furuno FAR2117/6.5 X-Band Radar
Furuno FE\$700 Echo Sounder
Furuno DS-50 Doppler Speed Log
Danelec DM500 Voyage Data Recorder
Furuno FA150 AIS
DM60 Daylight Signal Light
AT150/330 Air Whistle
Thrane & Thrane Ship Security Alert System (SSAS)
Transas Navi-Sailor ECDIS
Sound Signal Surveillance System
Furuno GP90D DGPS
Reflecta 1 Binnacle Compass
CCTV
Central Aerial System, CA3050
BST4000 Sound Powered Phone System
CIS3000 Intercom/Talk Back System
DICS6100 Digital Integrated Communications System

WALK TO WORK SYSTEM

Ampelmann E1000 AHC gangway

HELIDECK

Helideck is designed according to CAA regulation and is suitable for a Bell 212, Sikorsky S76/S92, Super Puma and smaller helicopter with a "D" value of 21m or less.

MANEUVERING (Dynamic Position System / Position Reference Systems)

Kongsberg K-Pos DP2
Independent Joystick Control.....Kongsberg CC 1 C-Joy
Position Measuring Equipment.....2 x DGPS (Trimble DSM 232)
2 x DGPS (Veripos CO25)
1 x RADIUS (Kongsberg 1000)
1 x HiPAP
Heading References.....3 x C-Plath Navigat X Mk 1
Environmental Sensors.....2 x Wind sensors
2 x MRU

COMMUNICATION EQUIPMENT

Satellite communication system capable of voice and video conferencing available throughout the vessel.



SPECIAL FEATURES

Accommodation.....Compliment for 121 person

Client Spaces.....Multiple 1 man state rooms / offices

Cinema.....Private cinema located on main deck with stadium seating and big screen T.V. with surround sound.

Gymnasium.....Gymnasium below main deck equipped with weight machines and exercise equipment

Conference Room.....Private conference room w/ internet & video conferencing.

Business center with internet and voice communication located.

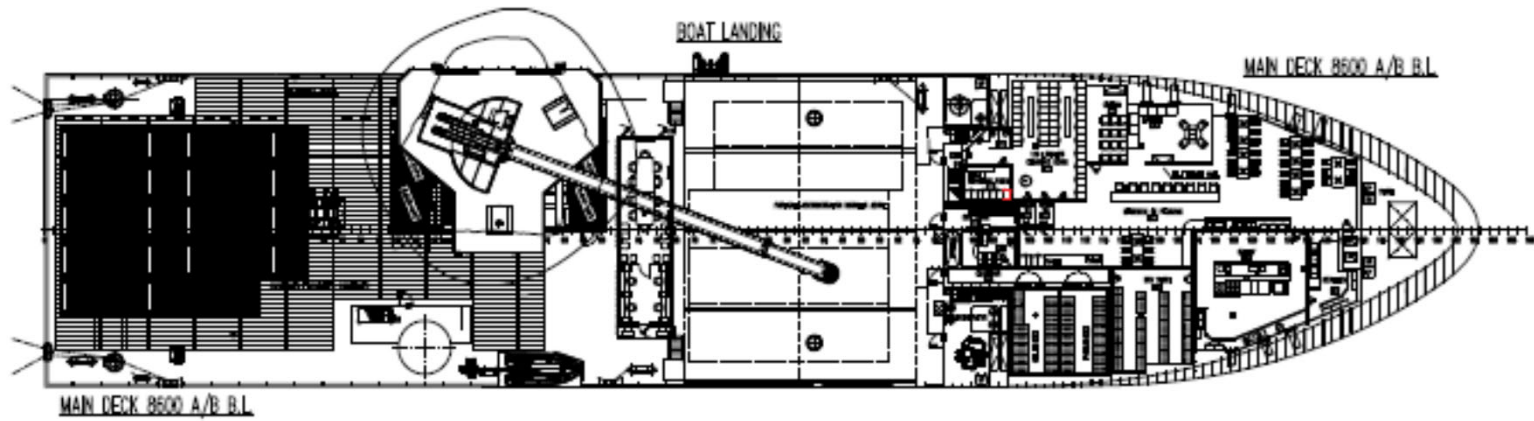
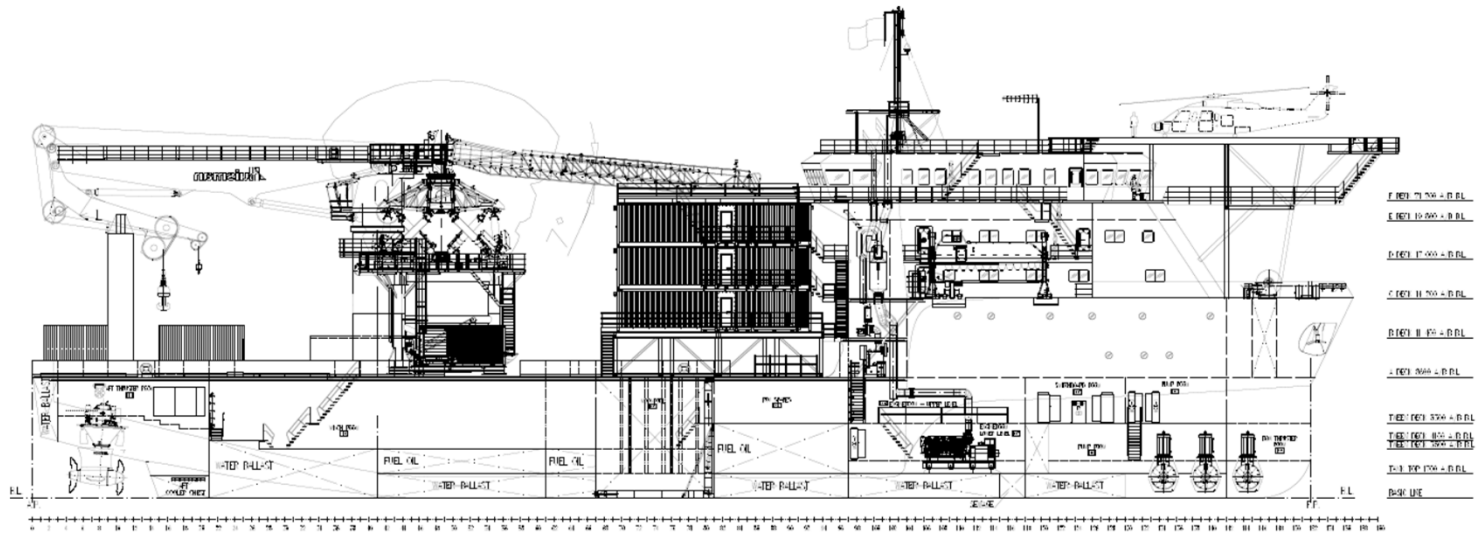
Semi-private ships office located in pilot house.

Comfortable meeting area and helideck staging area

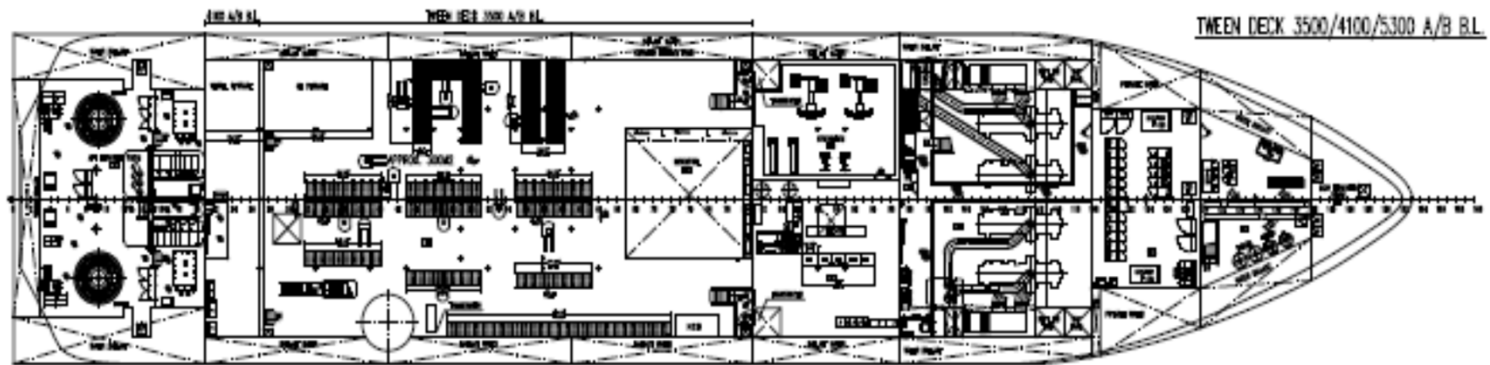
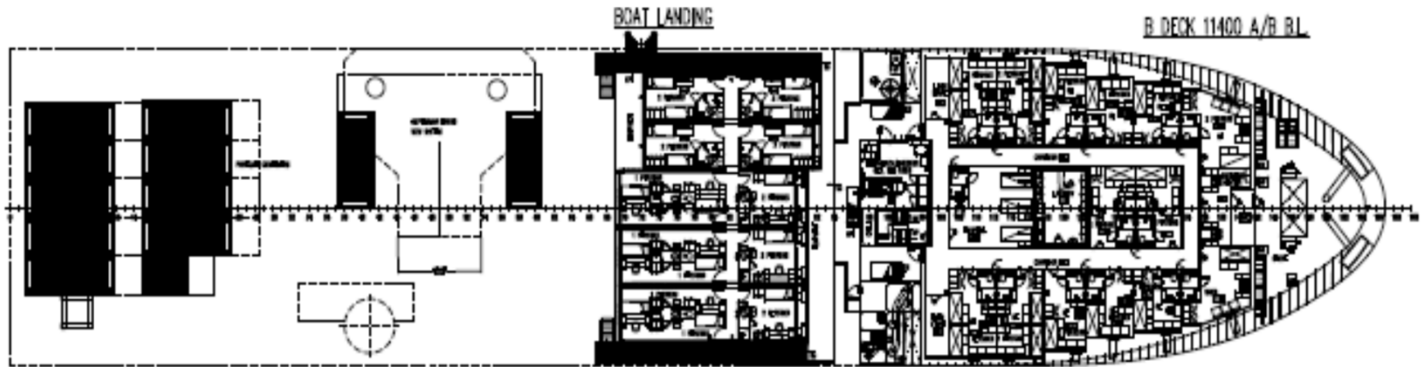
Hospital.....Fully equipped, 6 bed hospital located on C-Deck



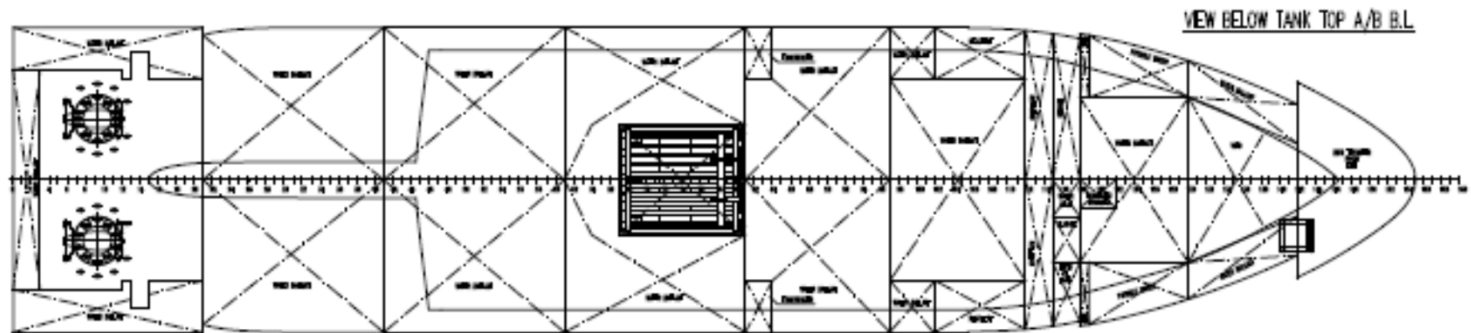
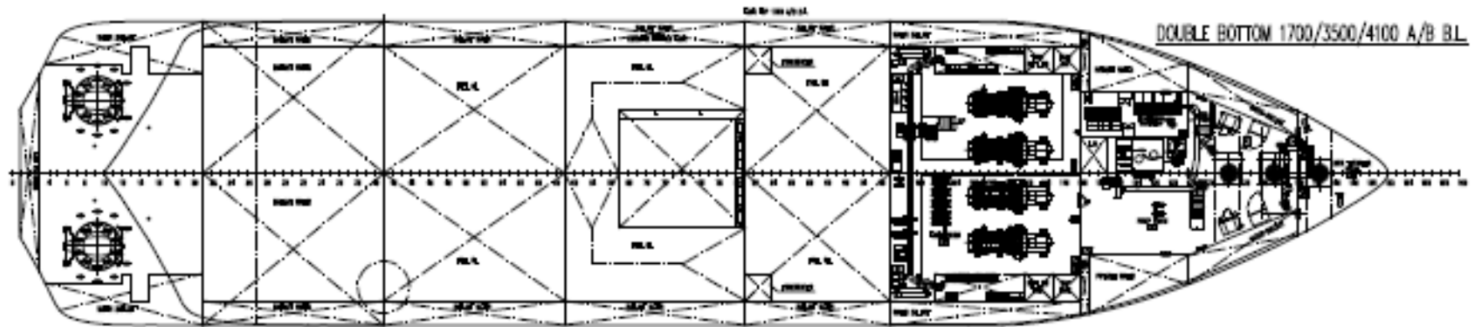
M/V Cade Candies



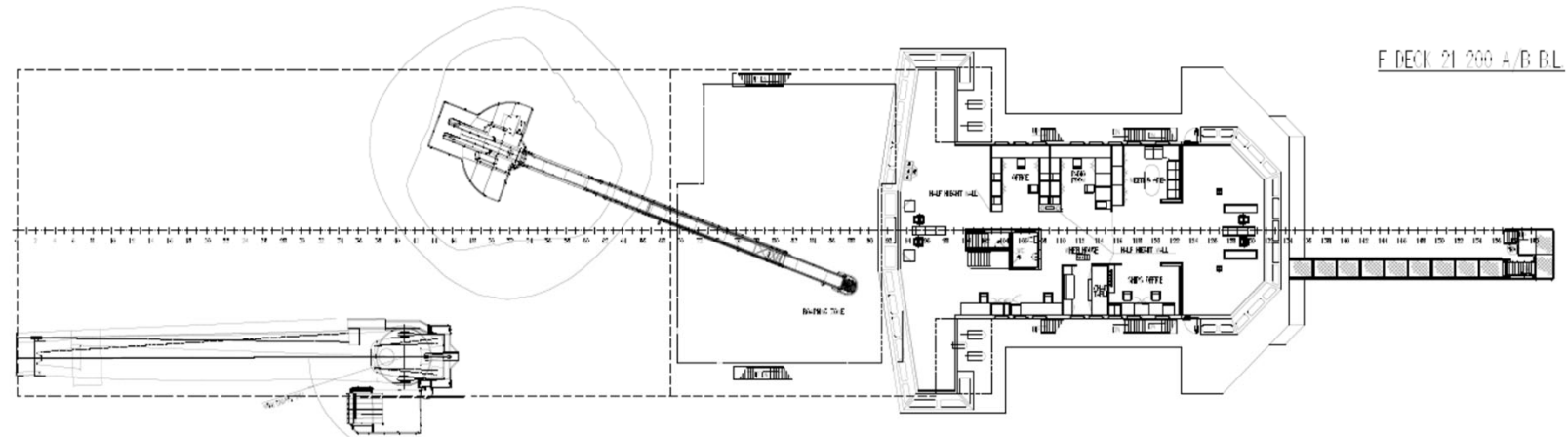
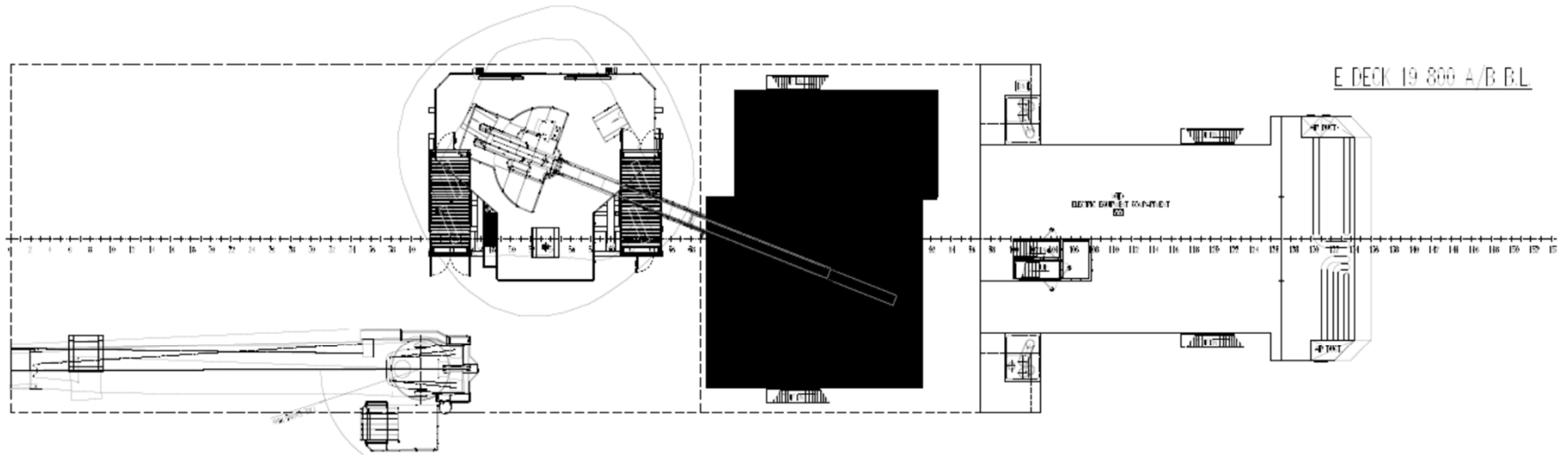
M/V Cade Candies



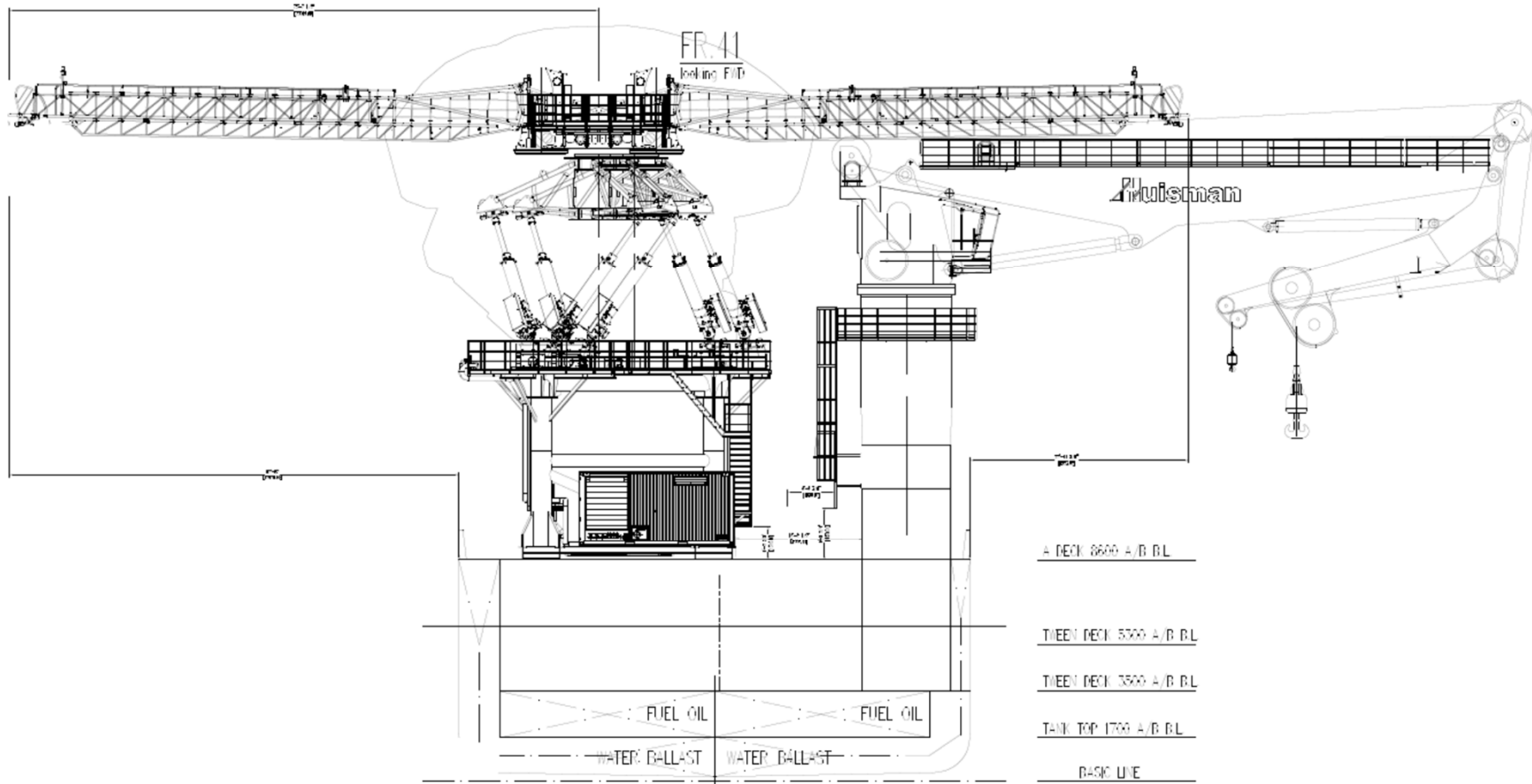
M/V Cade Candies



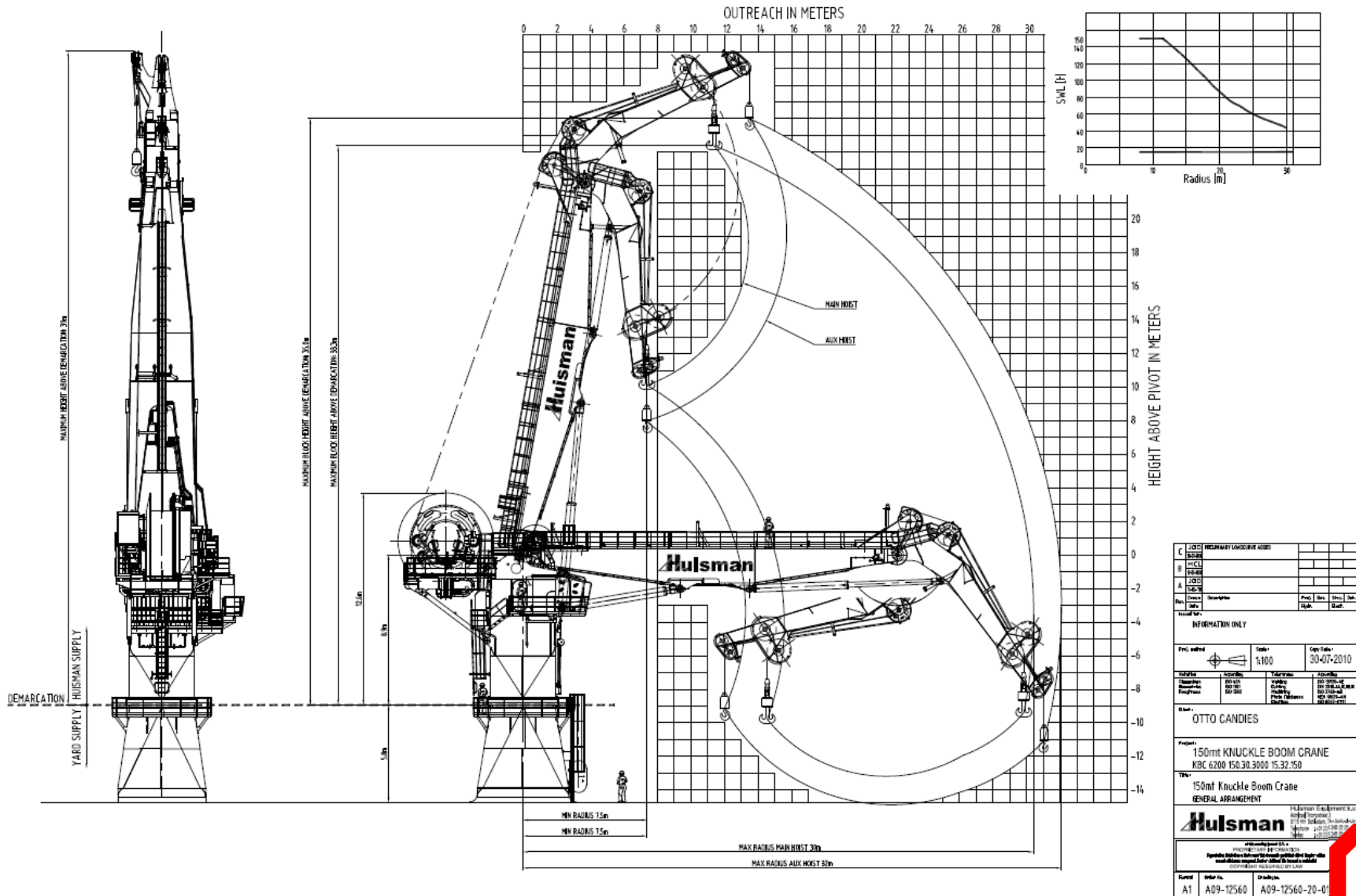
M/V Cade Candies



M/V Cade Candies



M/V Cade Candies



C (1/1) PRELIMINARY LAYOUT			
B (1/1) C			
A (1/1) A			
INFORMATION ONLY			
Proj. no. 01	Scale 1:100	Copy Date 30-07-2010	
Author	Checked	Reviewed	Approved
001/001	001/001	001/001	001/001
Client: OTTO CANDIES			
Project: 150mt KNUCKLE BOOM CRANE			
KBC 6200 150.30.3000 15.32.150			
Type: 150mt Knuckle Boom Crane			
GENERAL ARRANGEMENT			
<small>Hulsman Engineering B.V. Industrieweg 1 2711 HJ Schiedam, The Netherlands Phone: +31 (0) 78 631 2111 Fax: +31 (0) 78 631 2112 E-mail: info@hulsman.nl</small>			
Code A1	Order no. A09-12560	Draw. no. A09-12560-20-01	



M/V Cade Candies



Otto Candies, LLC

Post Office Box 25 • Des Allemands, Louisiana 70030-0025 • (504) 469-7700 • Fax: (504) 469-7740 • www.ottocandies.com

**Made in the U.S.A.
God Bless America**