

Equipped and fitted for:

- Dive Support Operations
- Multifunctional subsea services
- Helicopter operation



M/V Kelly Ann Candies

M/V Kelly Ann Candies

GENERAL

IMO No.....9562427
Owner/Manager.....Otto Candies, LLC
Classification and FlagU.S. Flag – Jones Act Compliant
Vessel purpose.....DSV
Year built2012
Design.....Candies Shipbuilders
Place built.....Houma, Louisiana USA
Builder.....Candies Shipbuilders
Class societyDNV
Class notationUSCG, ✱100A1, LMC, 1NA1, LMC, DP2,
ES (Clisan Dosing), UWILD, General Cargo,
MARPOL, SOLAS, IMO
Port of Registry.....New Orleans, LA
Home Port in GOM.....Port Fourchon, LA

MAIN DIMENSIONS

Length O.A.....84.70m / 277.8 ft
Length waterline.....81.415m / 267 ft
Breath molded.....18m / 59 ft
Depth molded.....7.4m / 24.3 ft
Design draught.....5m / 16.4 ft

TONNAGE

Gross tonnage.....5,289 GT ITC
Net tonnage.....1,586 NT ITC
Deadweight.....2,756.31 DWT

PERFORMANCE

Service speed.....10 knots

HELIDECK

Helio-deck is designed according to CAA regulation and is suitable for a Sikorsky S76 and smaller helicopter.

MAIN ENGINES AND PROPULSION (A/C ELECTRIC PROPULSION)

Main Engines.....4 x 3512 Cat = 1700kW/ each
Tunnel Thrusters.....TT4 / 2.0m diameter CPP (Schottel)
Stern Thrusters.....SRP 1515 / 2.8m Diameter
Variable speed
4 blade (Schottel)
Electric Propulsion.....Siemens Marine Multi Drive Solution

CAPABILITIES

Cargo Deck.....(140.5m²) 1,512 ft²
Deck strength.....5 ton / m²

TANK CAPACITY

Fuel oil.....800m³ / 209,600 gal
Ballast water.....2381m³ / 623,822 gal
FW generation.....19.5m³ day / 5,200 gal. day

DECK EQUIPMENT

Crane.....Triyards
Crane description.....60ton Knuckle Boom Crane
Main crane offshore rating.....60 ton @ 10m
Main crane maximum wire length....609m / 2,000ft
Electrical power to deck.....Yes
Air power to deck.....Yes
A-frame.....30 t A-Frame with Active Heave
Compensated winch
Wire Length.....3,000 m



NAVIGATION EQUIPMENT

Furuno GMDSS Model 1815
Furuno FAR2137S/12 S-Band Radar
Furuno FAR2117/6.5 X-Band Radar
Furuno FES700 Echo Sounder
Furuno DS-50 Doppler Speed Log
Danelec DM500 Voyage Data Recorder
Furuno FA150 AIS
DM60 Daylight Signal Light
AT150/330 Air Whistle
Thrane & Thrane Ship Security Alert System (SSAS)
Transas Navi-Sailor ECDIS
Sound Signal Surveillance System
Furuno GP90D DGPS
Reflecta 1 Binnacle Compass
CCTV
Central Aerial System, CA3050
BST4000 Sound Powered Phone System
CIS3000 Intercom/Talk Back System
DICS6100 Digital Integrated Communications System

MANEUVERING

Kongsberg K-Pos DP2
Dynamic Position System / Position Reference Systems
Independent Joystick Control:
Kongsberg CC 1 C-Joy
Position Measuring Equipment:
 2 x DGPS (Trimble DSM 232)
 2 x DGPS (Veripos CO25)
 1 x RADIUS (Kongsberg 1000)
 1 x HiPAP

MANEUVERING continued

Heading References:
 3 x C-Plath Navigat X Mk 1
Environmental Sensors:
 2 x Wind sensors
 2 x MRU

COMMUNICATION EQUIPMENT

Satellite communication system capable of voice and video conferencing available throughout the vessel.

SPECIAL FEATURES

DNV Diving Class Notation ... details on following page

Accommodation.....Compliment for 74 person
Client SpacesMultiple 1 man state rooms / offices.
Control RoomDive Control room on B-Deck
Cinema.....Private cinema located on main deck with stadium seating and big screen T.V. with surround sound.
Gymnasium.....Gymnasium below main deck equipped with weight machines and exercise equipment
Conference RoomPrivate conference room w/ internet & video conferencing.
 -Business center with internet and voice communication.
 -Semi-private ship's office located in pilot house.
 -Comfortable meeting area and heli-deck staging area
Hospital.....Fully equipped, 6 bed hospital located on B-Deck



SAT SYSTEM particulars:

DNV Diving Class Notation

•Dive System Parameters

The saturation diving system is designed to operate within the following parameters:

Mission requirements:

- Time 24 hrs diving per day
- Depth 220msw
- Duration 40 days

Maximum working depth: 300 msw

Maximum external working pressure (Bells): 100 msw

Breathing gas: HeO₂, O₂ and air

Maximum manning level in chambers: 14 persons in 3 chambers

Maximum number of divers in bell 1: 3 persons

SPHL Capacity: 1 units 14 pax each

HP Gas Storage: 35 tubes @ 207bar x 2.4m²

Divers Gas Reclaim 1 Units

System Exhaust Gas Reclaim 1 Unit with gas bag

GasPure System (Filtration) 1 system

HeliPure System (Molecular sieve) 1 Unit

Dive Control Main Deck

Saturation Chamber Control Tween Deck

Bell Launch & Recovery Systems 3

Weather environment air temperature range: -10°C to 45°C

DDC area and machinery room temp range: 15°C to 35°C

Sea water temperature: -2°C to 39°

Relative humidity: up to 100%

Dive Control Overview

The air conditioned Dive Control room is situated mid-ships on A Deck.

The stand for the bell handling system will also be situated in this control room area.

Dive Control functions which control and monitor the bell and divers are to be conventional.

Divers gas supplies and bell gas supplies shall be independent of each other and there shall be adequate redundancy of supply sources to comply with all regulations and recommendations.

Adequate redundancy of helium unscrambler communications units between dive control and the bell / divers shall be included.

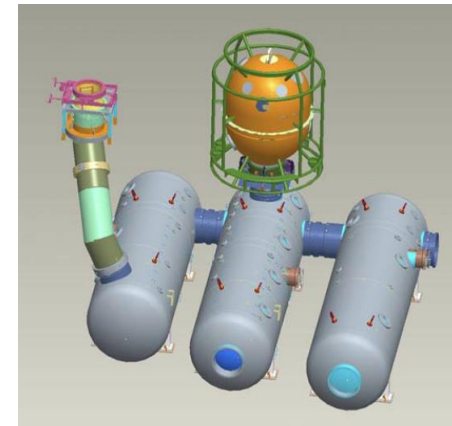
Duplex audio will be recorded.

Secondary communications to the bell will be by sound powered telephone

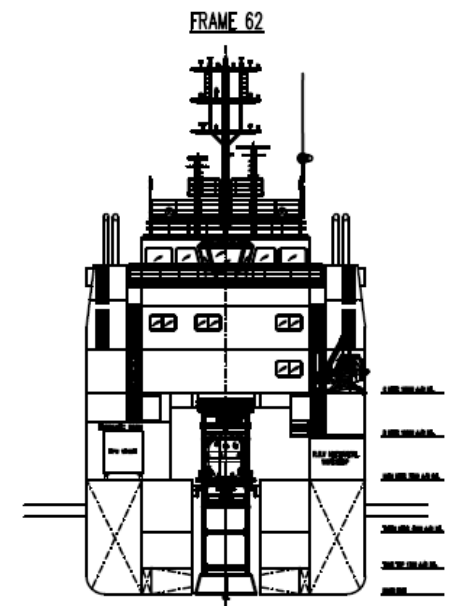
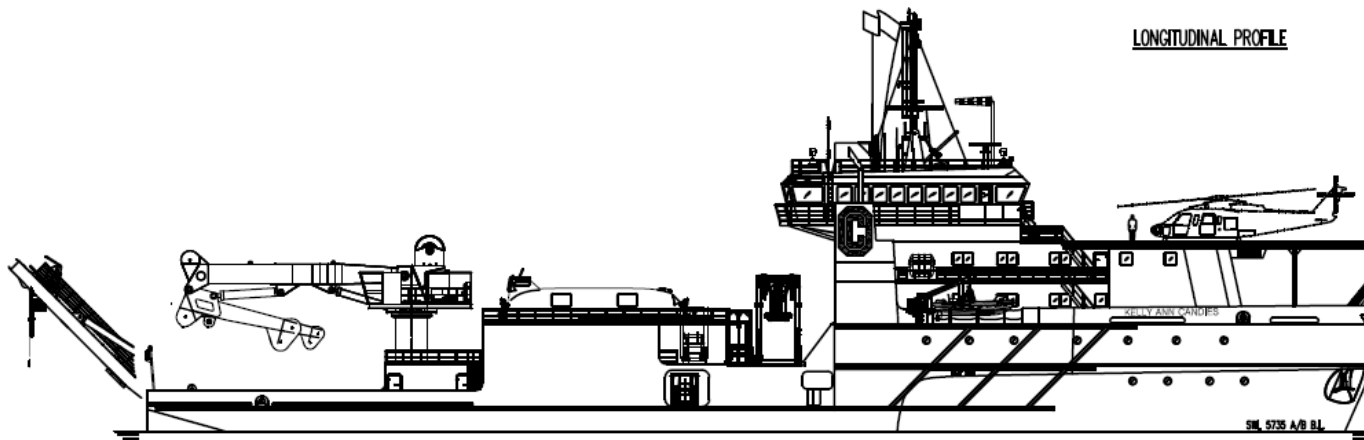
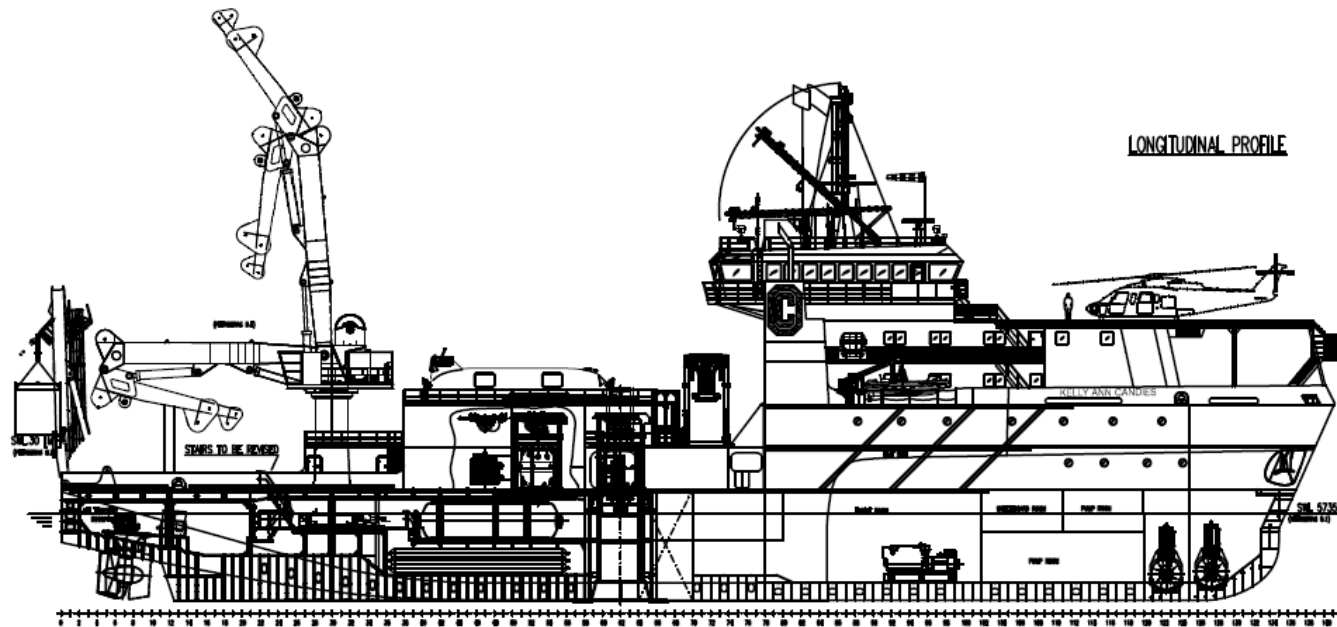
A through water communications system shall be provided

Design Operating Capacity

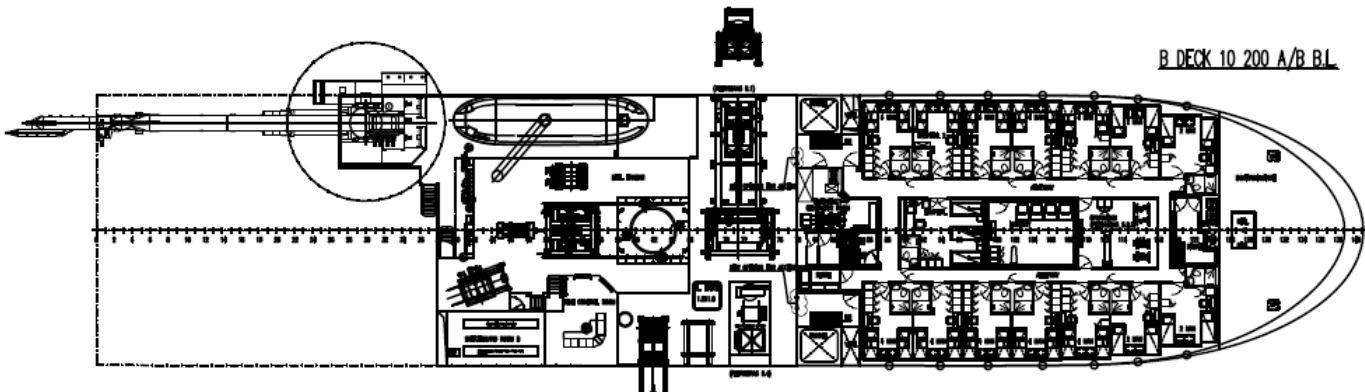
The saturation diving system shall have the capacity to operate with the bell at depth with all primary and secondary systems operational without compromising the integrity or secondary systems with all divers out working in a sea state up to 6.5m Hs



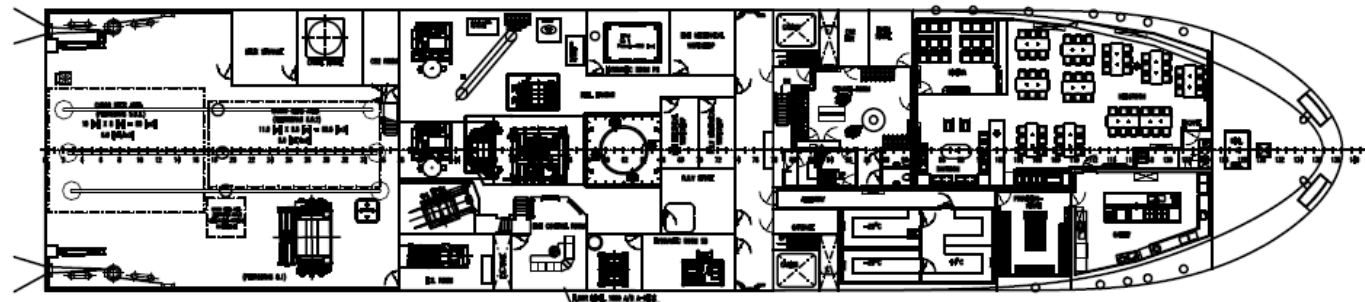
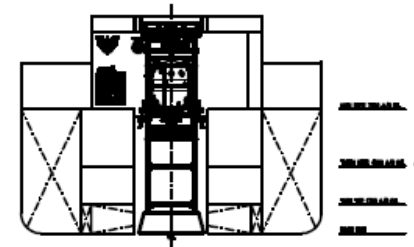
M/V Kelly Ann Candies



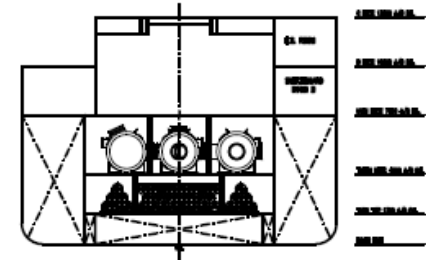
M/V Kelly Ann Candies



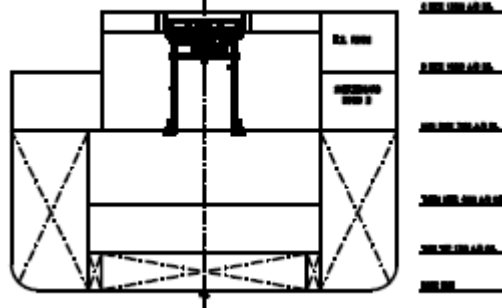
MOONPOOL FITTINGS - TRANSVERSAL



FRAME 50

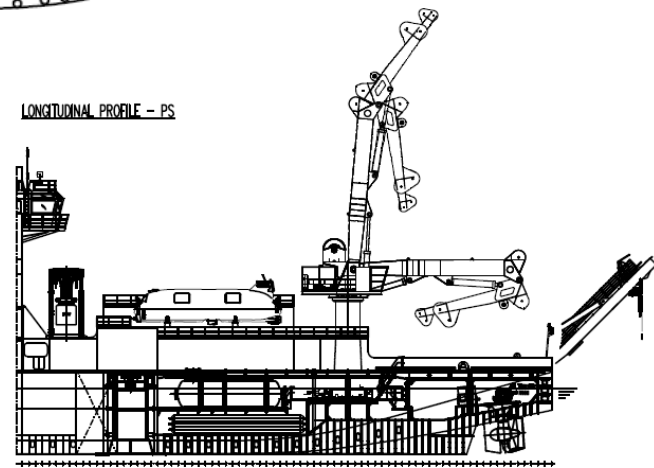


FRAME 48

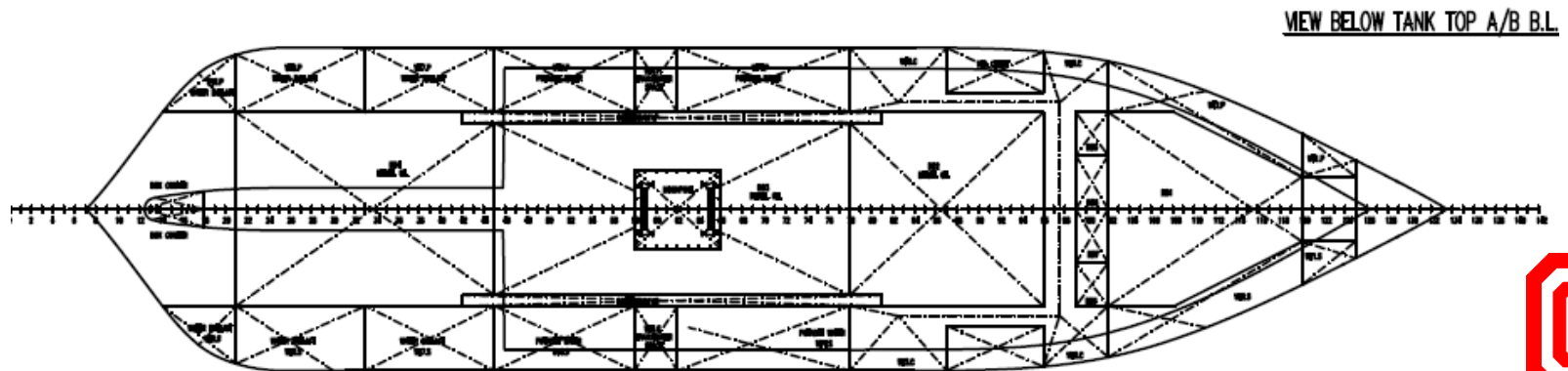
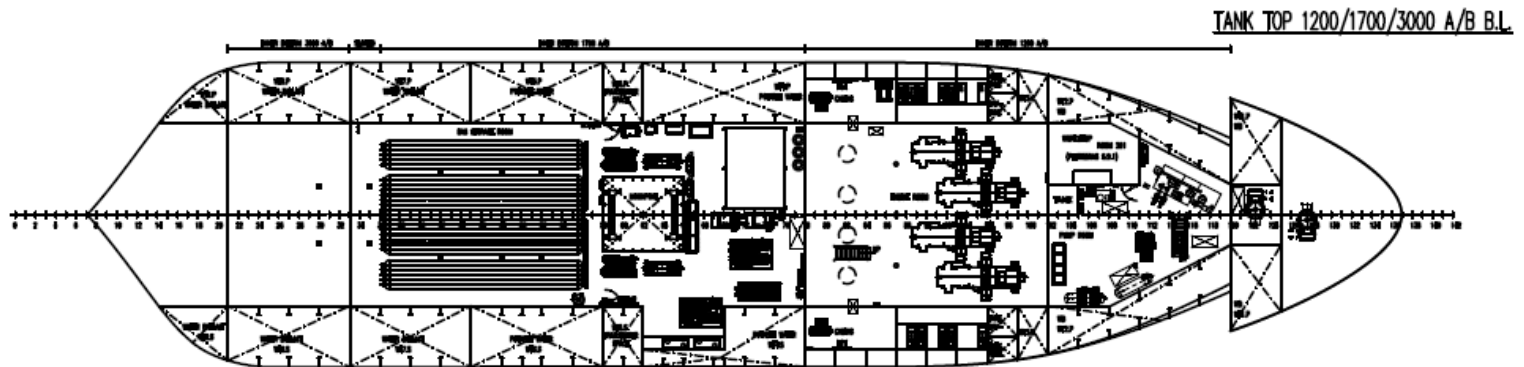
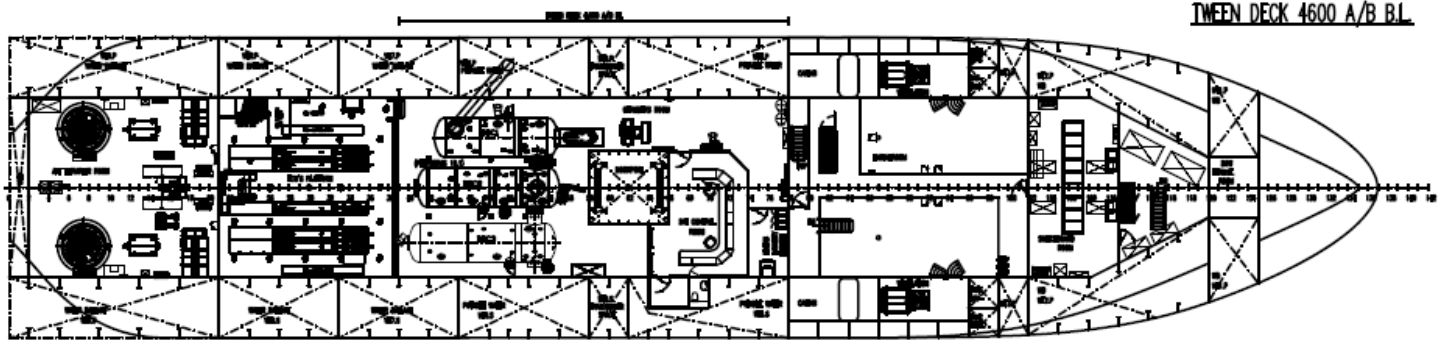


LONGITUDINAL PROFILE - PS

TOP DECK 27 800 A/B B.L.
 E DECK 18 800/20 000 A/B B.L.
 D DECK 15 800 A/B B.L.
 C DECK 13 000 A/B B.L.
 B DECK 10 200 A/B B.L.
 MAIN DECK 7400 A/B B.L.
 TRIM DECK 600 A/B B.L.
 BASE LINE

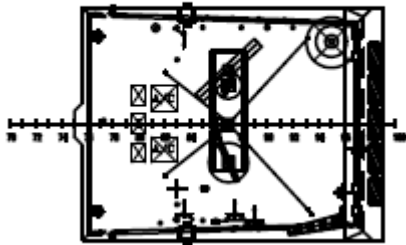


M/V Kelly Ann Candies

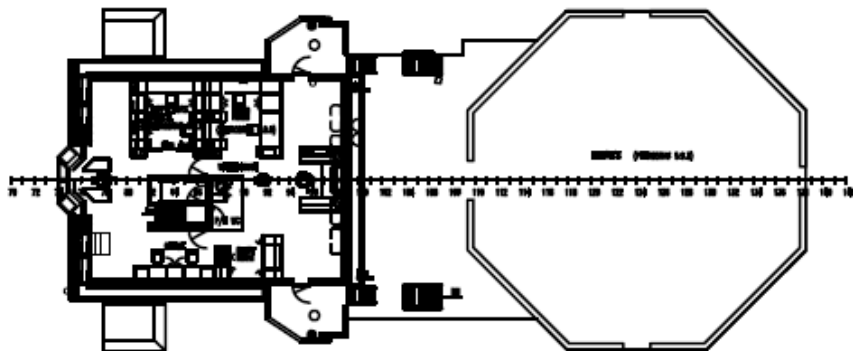


M/V Kelly Ann Candies

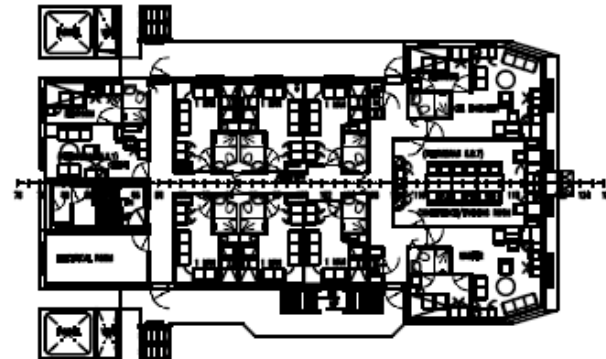
TOP DECK 22 900 A/B B.L.



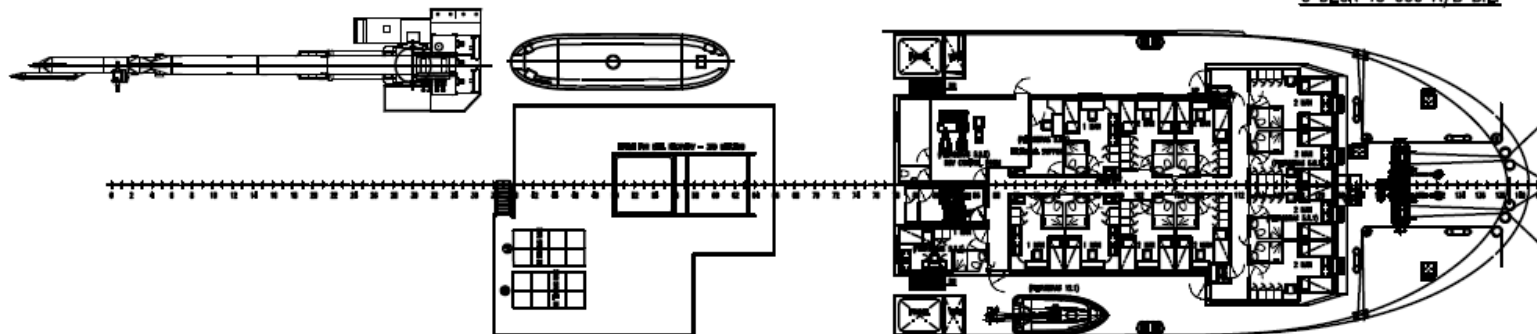
E DECK 18 600/20 000 A/B B.L.



D DECK 15 800/20 000 A/B B.L.



C DECK 13 000 A/B B.L.



M/V Kelly Ann Candies



Otto Candies, LLC

Post Office Box 25 • Des Allemands, Louisiana 70030-0025 • (504) 469-7700 • Fax: (504) 469-7740 • www.ottocandies.com

**Made in the U.S.A.
God Bless America**