



**M/V Grant Candies**

# M/V Grant Candies

## GENERAL

IMO No..... 9481374  
Owner/Manager..... Otto Candies, LLC  
Classification and Flag .... U.S. Flag - Jones Act Compliant  
Vessel Purpose..... IMR  
Design..... Candies Shipbuilders  
Year Built..... 2009  
Place Built..... Anacortes, WA  
Builder..... Dakota Creek  
Class Society..... Lloyd's Register  
Class Notation..... USCG, ✕A1, Circle E, AMS, DPS-2, 1NA1, LMC, ES  
(Clisan Dosing), UWILD, General Caro, MARPOL,  
SOLAS, IMO  
Port Of Registry..... New Orleans, La  
Home Port In GOM..... Port Fourchon, LA

## MAIN DIMENSIONS

Length O.A..... 89.25m / 292ft  
Length waterline..... 81.7m / 268ft  
Breath molded..... 18m / 59ft  
Depth molded..... 7.4m / 24.3ft  
Design draught..... 5.00m / 16.4ft  
Scantling draught..... 7.10m / 23ft  
Moonpool..... The vessel is outfitted with a moon pool of 7.62m x  
7.01m wide, clear opening with bottom open door.

## TONNAGE

Gross tonnage..... 4,150 GT ITC  
Net tonnage..... 1,245 NT ITC  
Deadweight..... 3,700t DWT

## PERFORMANCE

Service speed..... 10 knots  
Maximum speed..... 13 knots  
Fuel consumption at max. speed..... 14.38m<sup>3</sup> / 3,800 gallons per day  
Fuel consumption at service speed..... 9.08m<sup>3</sup> / 2,400 gallons per day  
Fuel consumption on DP..... 7.19m<sup>3</sup> / 1,900 gallons per day

## MAIN ENGINES AND PROPULSION

Main Engines..... 2 x 3512C Cat – 1700kW each  
2 x 3516C Cat – 2350kW each  
Tunnel Thrusters..... 2 x 1,140 kW STT 4CP (Schottel)  
Stern Thrusters ..... 2 x 2,250 kW Combi Drive (Schottel)

## CAPABILITIES

Cargo Deck..... 917m<sup>2</sup> / 9,877 ft<sup>2</sup>  
Deck strength..... 5 ton / m<sup>2</sup> - Uniform

## TANK CAPACITY

Fuel oil..... 734m<sup>3</sup> / 194,000 gal  
Ballast water..... 1726m<sup>3</sup>/455,960 gal  
Fresh water..... 889.5m<sup>3</sup> / 235,000 gal  
FW generation..... 11m<sup>3</sup> / 3,000-3,600 gal/ day



## DECK EQUIPMENT

Crane.....	Hydramarine
Crane Description.....	Knuckle Boom Crane
Main Crane Offshore Rating.....	100t AHC w/ 3200 m wire cable –single fall
Main Crane Maximum Wire Length.....	3,200m
Main Crane Maximum Hook Height.....	36m
Auxiliary Winch is AHC and Rated at 15t while being Man-Rated to 5 MT.	
Electrical Power To Deck.....	Yes
Air Power To Deck.....	Yes

## NAVIGATION EQUIPMENT

Furuno GMDSS Model 1815  
Furuno FAR2137S/12 S-Band Radar  
Furuno FAR2117/6.5 X-Band Radar  
Furuno FE\$700 Echo Sounder  
Furuno DS-50 Doppler Speed Log  
Danelec DM500 Voyage Data Recorder  
Furuno FA150 AIS  
DM60 Daylight Signal Light  
AT150/330 Air Whistle  
Thrane & Thrane Ship Security Alert System (SSAS)  
Transas Navi-Sailor ECDIS  
Sound Signal Surveillance System  
Furuno GP90D DGPS  
Reflecta 1 Binnacle Compass  
CCTV  
Central Aerial System, CA3050  
BST4000 Sound Powered Phone System  
CIS3000 Intercom/Talk Back System  
DICS6100 Digital Integrated Communications System

## HELIDECK

Helideck is designed according to CAA regulation and is suitable for a Sikorsky S76 and smaller helicopter with a “D” value of 17m.

## MANEUVERING (Dynamic Position System / Position Reference Systems)

Kongsberg K-Pos DP2	
Independent Joystick Control.....	Kongsberg CC 1 C-Joy
Position Measuring Equipment.....	2 x DGPS (Trimble DSM 232) 2 x DGPS (Veripos CO25) 1 x RADIUS (Kongsberg 1000) 1 x HiPAP 2 x Cyscan MK4
Heading References.....	3 x C-Plath Navigat X Mk 1
Environmental Sensors.....	2 x Wind sensors 2 x MRU

## COMMUNICATION EQUIPMENT

Satellite communication system capable of voice and video conferencing available throughout the vessel.



## **SPECIAL FEATURES**

---

Accommodation.....Compliment for 122 persons

Client Spaces.....Multiple 1 man state rooms / offices

Cinema.....Private cinema located on main deck with stadium seating and big screen T.V. with surround sound.

Gymnasium.....Gymnasium below main deck equipped with weight machines and exercise equipment

Conference Room.....Private conference room with internet & video conferencing.

Business center with internet and voice communication located.

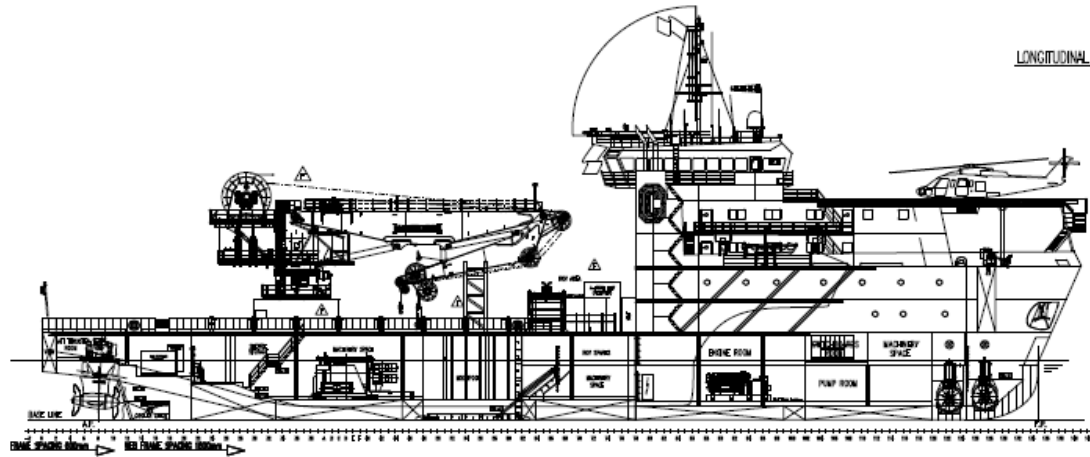
Semi-private ships office located in pilot house.

Comfortable meeting area and helideck staging area

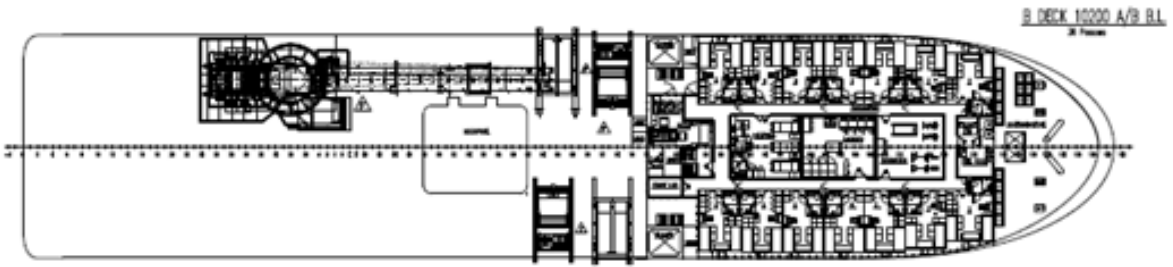
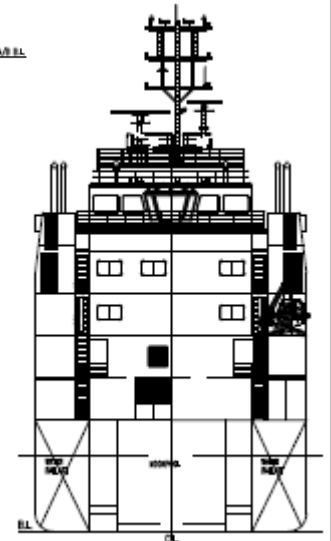
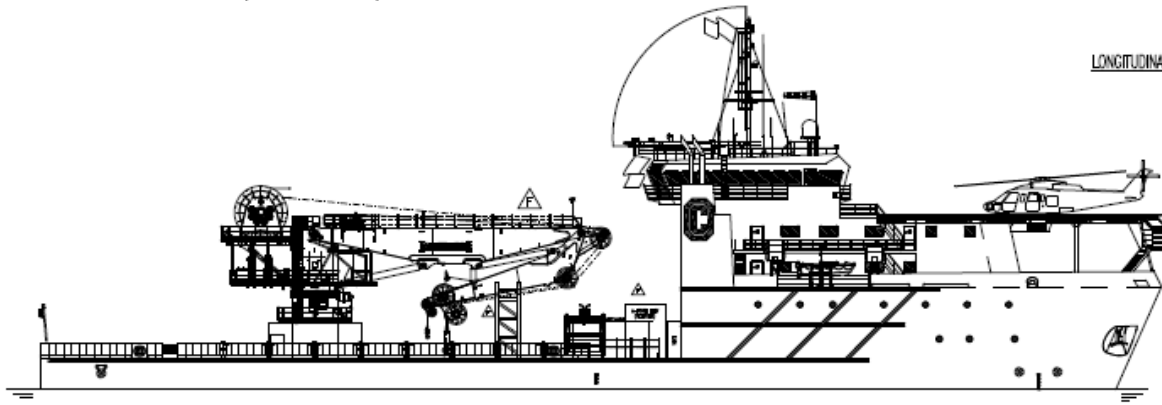
Hospital.....Fully equipped, 6 bed hospital located on D-Deck



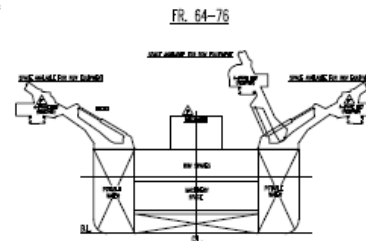
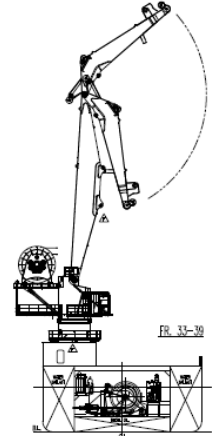
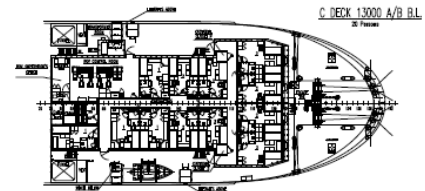
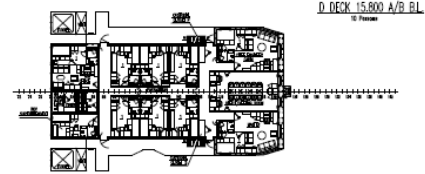
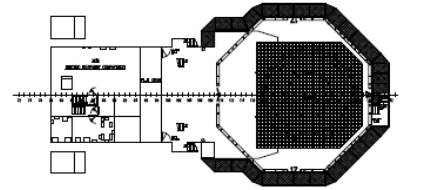
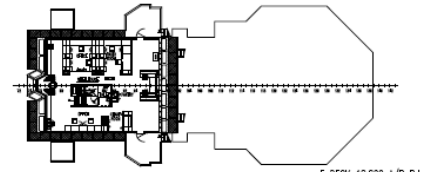
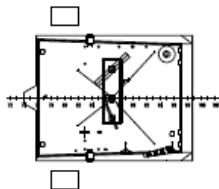
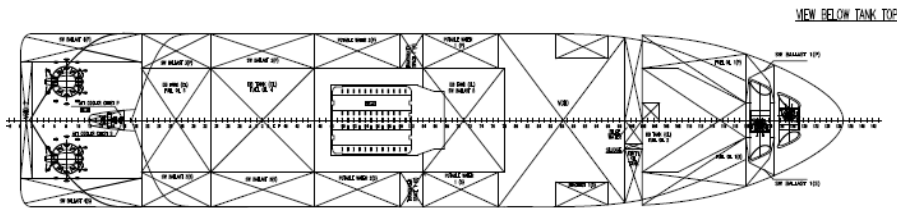
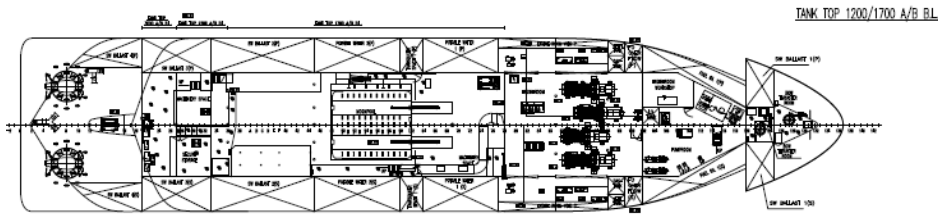
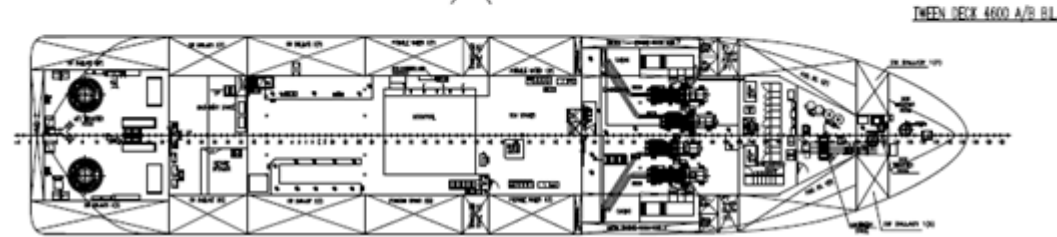
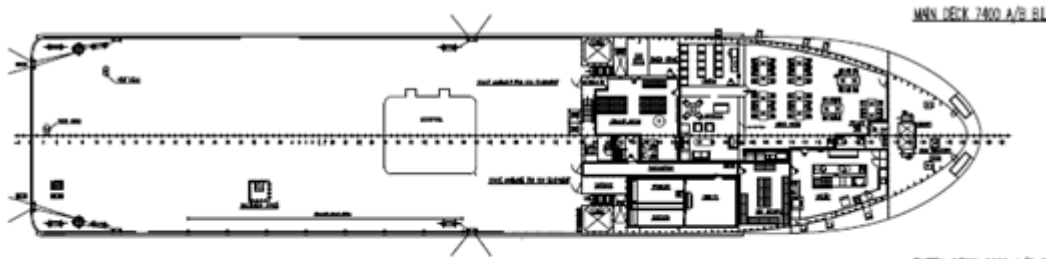
# M/V Grant Candies



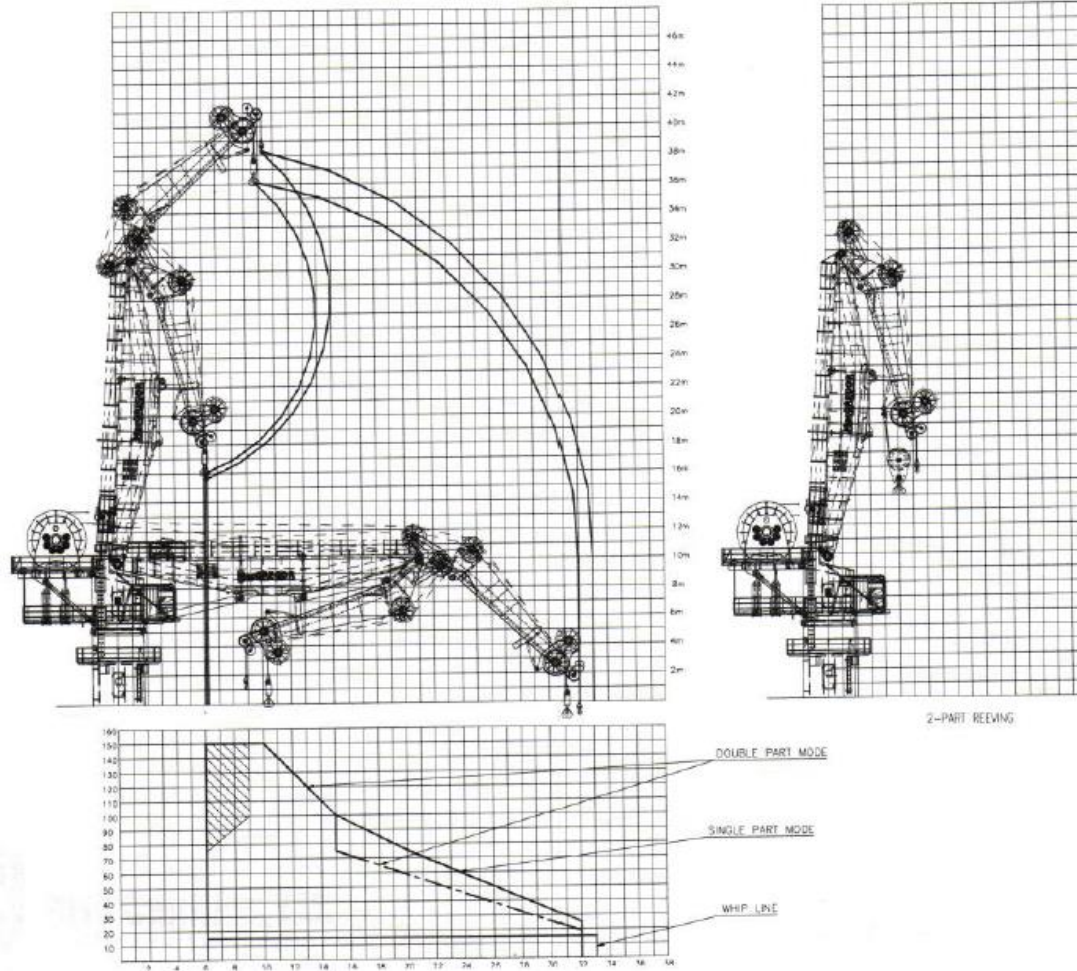
- TOP DECK 22 800 A/B B.L.
- E DECK 18 800/20 800 A/B B.L.
- D DECK 15 800 A/B B.L.
- C DECK 13 800 A/B B.L.
- B DECK 10 200 A/B B.L.
- WHA DECK 700 A/B B.L.
- TRIN DECK 600 A/B B.L.
- TANK TOP 1000/700/2000 A/B B.L.
- BASE LINE



# M/V Grant Candies







# M/V Grant Candies

---



## Otto Candies, LLC

Post Office Box 25 • Des Allemands, Louisiana 70030-0025 • (504) 469-7700 • Fax: (504) 469-7740 • [www.ottocandies.com](http://www.ottocandies.com)

**Made in the U.S.A.**  
**God Bless America**