



 **M/V Chloe Candies**

M/V Chloe Candies

GENERAL

IMO No..... 1184773
Owner/Manager..... Otto Candies, LLC
Classification and Flag..... U.S. Flagged – Jones Act Compliant
Vessel Purpose..... IMR
Design..... Candies Shipbuilders, LLC
Year Built..... 2006
Place Built..... Houma, LA
Builder..... Candies Shipbuilders, LLC
Class Society..... Lloyd's Register
Class Notation..... USCG, ✕A1. Circle E, +ACC, 1NA1, LMC,
DP AA, ES (Clisan Dosing), UWILD, General
Caro, MARPOL, SOLAS, IMO
Port of Registry..... New Orleans, La
Home Port In GOM..... Port Fourchon, LA

MAIN DIMENSIONS

Length O.A..... 85.25 m / 280 ft
Length waterline..... 81.7 m / 268 ft
Breath molded..... 18.0 m / 59 ft
Depth to main deck..... 7.4m / 24 ft
Design draught..... 5.0m / 16.4 ft
Scantling draught..... 6.0 m / 19.7 ft
Moonpool..... The vessel is outfitted with a moon pool of
28' long x 20' wide with bottom door

TONNAGE

Gross tonnage..... 4,057 GT ITC
Net tonnage..... 1,217NT ITC
Deadweight..... 3,773.57t DWT

PERFORMANCE

Service speed..... 10 knots
Maximum speed..... 13 knots
Fuel consumption at max. speed..... 12.87 m³ / 3,400 gallons per day
Fuel consumption at service speed..... 8.33 m³ / 2,200 gallons per day
Fuel consumption on DP..... 5.49 m³ / 1,450 gallons per day

MAIN ENGINES AND PROPULSION

Main Engines..... 4 x 3516C Cat – 2350kW each
Bow Thrusters..... 2 x Berg – SP-12-S
Z-Drives..... 2 x Steerprop – SP-25-D

CAPABILITIES

Cargo Deck..... (1,151m²) 12,395 ft²
Deck strength..... 5 ton / m²
Length..... 61m / 200ft
Breadth..... 19m / 62ft
Height at cargo rail..... 1.5m / 5ft
(Cargo rails are removable)

TANK CAPACITY

Fuel oil..... 1,650m³ / 435,883 gal
Ballast water..... 3,524m³ / 923,288 gal
Fresh water..... 359m³ / 94,058 gal
FW generation..... 19m³ day / 5,000 gal. day



DECK EQUIPMENT

Crane.....	Hydramarine
Crane Description.....	100 ton Knuckle Boom Crane
Hook Height	78 ft
Main crane maximum wire length.....	300m
Electrical power to deck	Yes
Air power to deck	Yes

Below Deck EquipmentRapp Hydema
150t Rated Winch capable 100t @ 3000 m

NAVIGATION EQUIPMENT

Furuno GMDSS Model 1815
Furuno FAR2137S/12 S-Band Radar
Furuno FAR2117/6.5 X-Band Radar
Furuno FE\$700 Echo Sounder
Furuno DS-50 Doppler Speed Log
Danelec DM500 Voyage Data Recorder
Furuno FA150 AIS
DM60 Daylight Signal Light
AT150/330 Air Whistle
Thrane & Thrane Ship Security Alert System (SSAS)
Transas Navi-Sailor ECDIS
Sound Signal Surveillance System
Furuno GP90D DGPS
Reflecta 1 Binnacle Compass
CCTV
Central Aerial System, CA3050
BST4000 Sound Powered Phone System
CIS3000 Intercom/Talk Back System
DICS6100 Digital Integrated Communications System

HELIDECK

Helio-deck is designed according to CAA regulation and is suitable for a Sikorsky S76 and smaller helicopter. The helio-deck has a "D" value of 17.46m and maximum landing weight of 5,080 kg.

MANEUVERING (Dynamic Position System / Position Reference Systems)

Kongsberg K-Pos DP2
Independent Joystick Control.....Kongsberg CC 1 C-Joy
Position Measuring Equipment.....2 x DGPS (Trimble DSM 232)
2 x DGPS (Veripos CO25)
1 x RADIUS (Kongsberg 1000)
1 x HiPAP
Heading References.....3 x C-Plath Navigat X Mk 1
Environmental Sensors.....2 x Wind sensors
2 x MRU

COMMUNICATION EQUIPMENT

Satellite communication system capable of voice and video conferencing available throughout the vessel.



SPECIAL FEATURES

Accommodation.....Compliment for 63 person

Client Spaces.....Multiple 1 man state rooms / offices

Control room on C-Deck arranged for (2) ROV system / winch operations.

Cinema.....Private cinema located on main deck with stadium seating and big screen T.V. with surround sound.

Gymnasium.....Gymnasium below main deck equipped with weight machines and exercise equipment.

Conference Room.....Private conference room w/ internet & video conferencing.

Business center with internet and voice communication located.

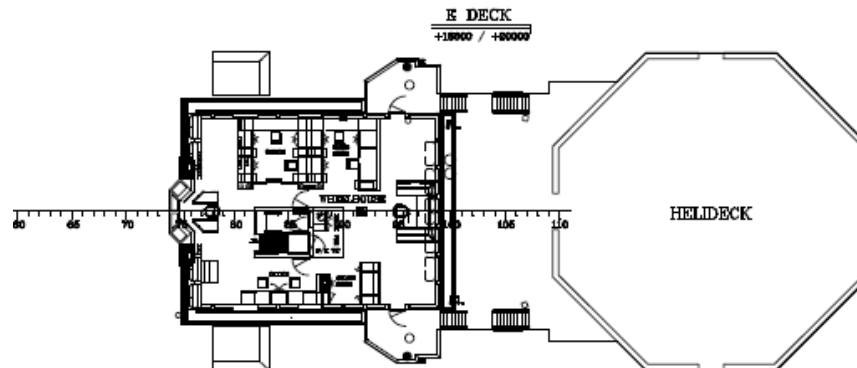
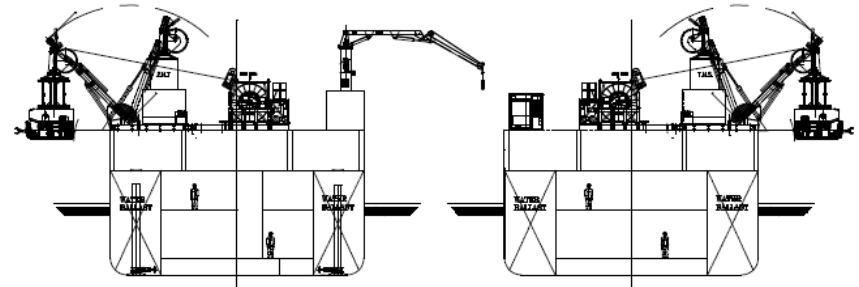
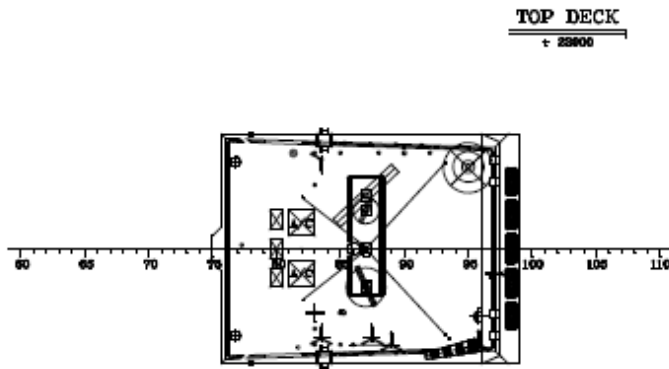
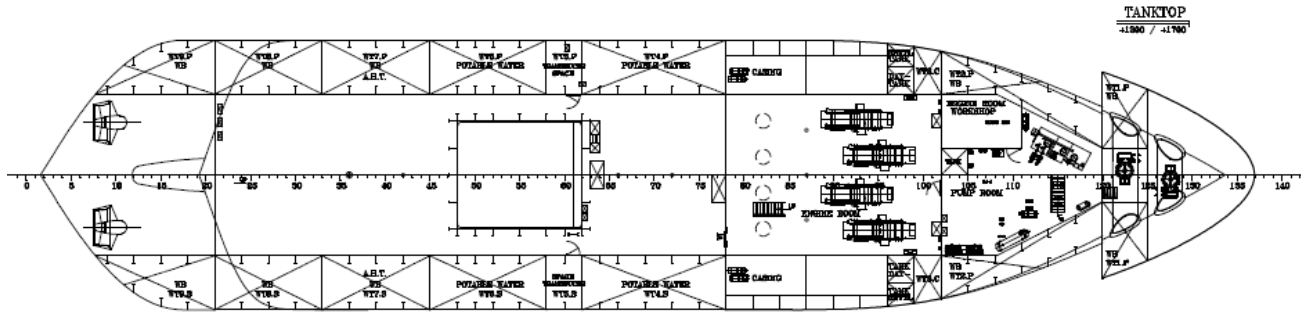
Semi-private ships office located in pilot house.

Comfortable meeting area and helideck staging area.

Hospital.....Fully equipped, 6 bed hospital located on C-Deck

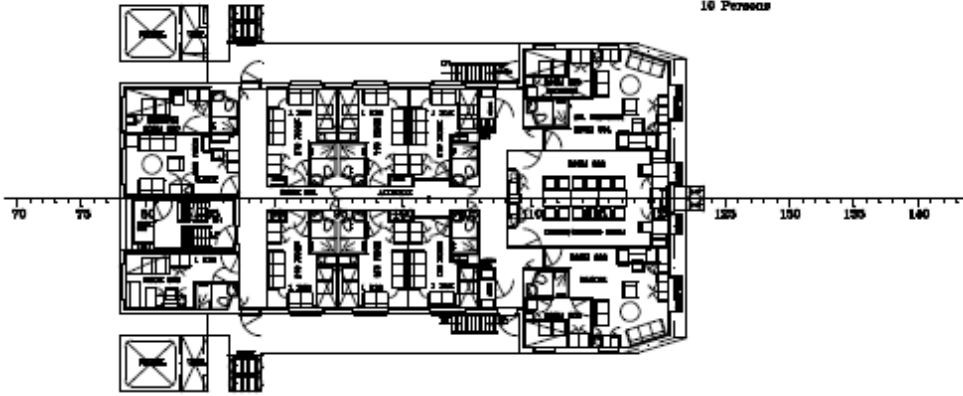


M/V Chloe Candies

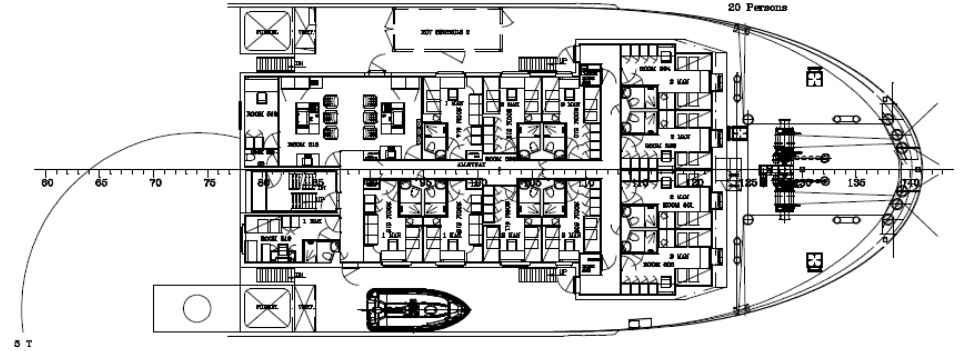


M/V Chloe Candies

D DECK
+16800
16 Persons

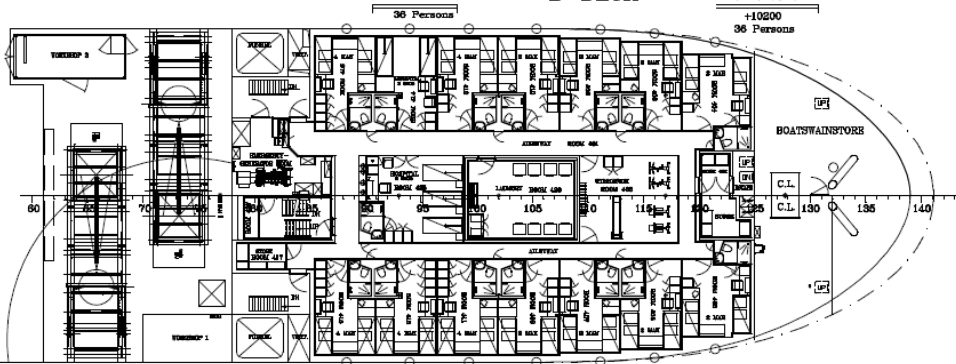


C DECK
+13000
20 Persons



B-DECK

B DECK
+10200
36 Persons



M/V Chloe Candies



Otto Candies, LLC

Post Office Box 25 • Des Allemands, Louisiana 70030-0025 • (504) 469-7700 • Fax: (504) 469-7740 • www.ottocandies.com

Made in the U.S.A.
God Bless America