



**M/V Cade Candies**

# M/V Cade Candies

## GENERAL

IMO No .....9518957  
Owner/Manager.....Otto Candies, LLC  
Classification and Flag.....U.S. Flag – Jones Act Compliant  
Vessel Purpose .....IMR  
Design .....Candies Shipbuilders  
Year Built.....2010  
Place Built.....Anacortes, WA  
Builder.....Dakota Creek  
Class Society.....Lloyd's Register  
Class Notation.....USCG, ,  $\Sigma$ 100A1, LMC, 1NA1, LMC, DP AA, ES  
(Clisan Dosing), UWILD, General Caro, MARPOL,  
SOLAS, IMO  
Port Of Registry.....New Orleans, La  
Home Port In GOM..... Port Fourchon, LA

## MAIN DIMENSIONS

Length O.A... ..94.30m / 309ft  
Length waterline .....89.55m / 294ft  
Breath molded.....20.0m / 66ft  
Depth molded.....8.60m / 28ft  
Design draught.....6.00m / 20ft  
Scantling draught.....7.10m / 23ft  
Working draft.....6.4m / 21ft  
Moonpool.....The vessel is outfitted with a moon pool of 25' long  
x 23' wide, clear opening with bottom open door.

## TONNAGE

Gross tonnage.....5,289 GT ITC  
Net tonnage.....1,586 NT ITC  
Deadweight.....6,428.6t DWT

## PERFORMANCE

Service speed.....10 knots  
Maximum speed.....14.5 knots  
Fuel consumption at max. speed.....18.17m<sup>3</sup> day / 4,800 gal day  
Fuel consumption at service speed.....15.14m<sup>3</sup> day/ 4,000 gal day  
Fuel consumption on DP.....8.33m<sup>3</sup> day / 2,200 gal day

## MAIN ENGINES AND PROPULSION (A/C Electric Propulsion)

Main Engines.....4 x 3516C Cat – 2350kW each  
Tunnel Thrusters.....3 x 910 kW STT 3FP (Schottel)  
Stern Thrusters.....2 x 2,500kW Combi Drive (Schottel)

## CAPABILITIES

Cargo Deck.....(1,151m<sup>2</sup>) 12,395 ft<sup>2</sup>  
Deck strength.....(10 MT/m<sup>2</sup>) 2,048 lb/ft<sup>2</sup>

## TANK CAPACITY

Fuel oil.....1650m<sup>3</sup> / 435,883 gal  
Ballast water.....3524m<sup>3</sup> / 923,288 gal  
Fresh water.....359m<sup>3</sup> / 94,058 gal  
FW generation.....19m<sup>3</sup> day / 5,000 gal. day



## DECK EQUIPMENT

Crane.....	Huisman Model: KBC 6200
Crane Description.....	150 Ton Knuckle Boom Crane Active Heave Compensated
Main Crane Offshore Rating.....	150 Ton With 3,300m Cable
Main Crane Maximum Wire Length.....	3,300m
Main Crane Maximum Boom Height.....	40m
Deck Tuggers.....	(2) 5ton Tuggers On Main Crane
Electrical Power To Deck.....	Yes
Air Power To Deck.....	Yes

## NAVIGATION EQUIPMENT

Furuno GMDSS Model 1815  
Furuno FAR2137S/12 S-Band Radar  
Furuno FAR2117/6.5 X-Band Radar  
Furuno FE\$700 Echo Sounder  
Furuno DS-50 Doppler Speed Log  
Danelec DM500 Voyage Data Recorder  
Furuno FA150 AIS  
DM60 Daylight Signal Light  
AT150/330 Air Whistle  
Thrane & Thrane Ship Security Alert System (SSAS)  
Transas Navi-Sailor ECDIS  
Sound Signal Surveillance System  
Furuno GP90D DGPS  
Reflecta 1 Binnacle Compass  
CCTV  
Central Aerial System, CA3050  
BST4000 Sound Powered Phone System  
CIS3000 Intercom/Talk Back System  
DICS6100 Digital Integrated Communications System

## HELIDECK

Helideck is designed according to CAA regulation and is suitable for a Bell 212, Sikorsky S76\S92, Super Puma and smaller helicopter with a "D" value of 21m or less.

## MANEUVERING (Dynamic Position System / Position Reference Systems)

Kongsberg K-Pos DP2	
Independent Joystick Control.....	Kongsberg CC 1 C-Joy
Position Measuring Equipment.....	2 x DGPS (Trimble DSM 232) 2 x DGPS (Veripos CO25) 1 x RADIUS (Kongsberg 1000) 2 x HiPAP 1 x CyScan
Heading References.....	3 x C-Plath Navigat X Mk 1
Environmental Sensors.....	3 x Wind sensors 3 x MRU

## COMMUNICATION EQUIPMENT

Satellite communication system capable of voice and video conferencing available throughout the vessel.



## **SPECIAL FEATURES**

---

Accommodation.....Compliment for 69 person

Client Spaces.....Multiple 1 man state rooms / offices

Cinema.....Private cinema located on main deck with stadium seating and big screen T.V. with surround sound.

Gymnasium.....Gymnasium below main deck equipped with weight machines and exercise equipment

Conference Room.....Private conference room w/ internet & video conferencing.

Business center with internet and voice communication located.

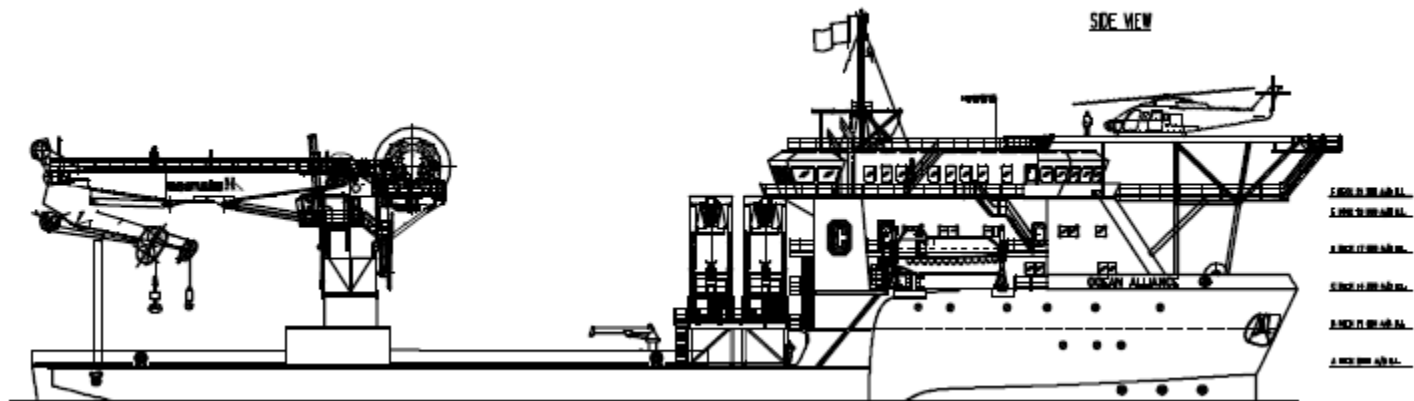
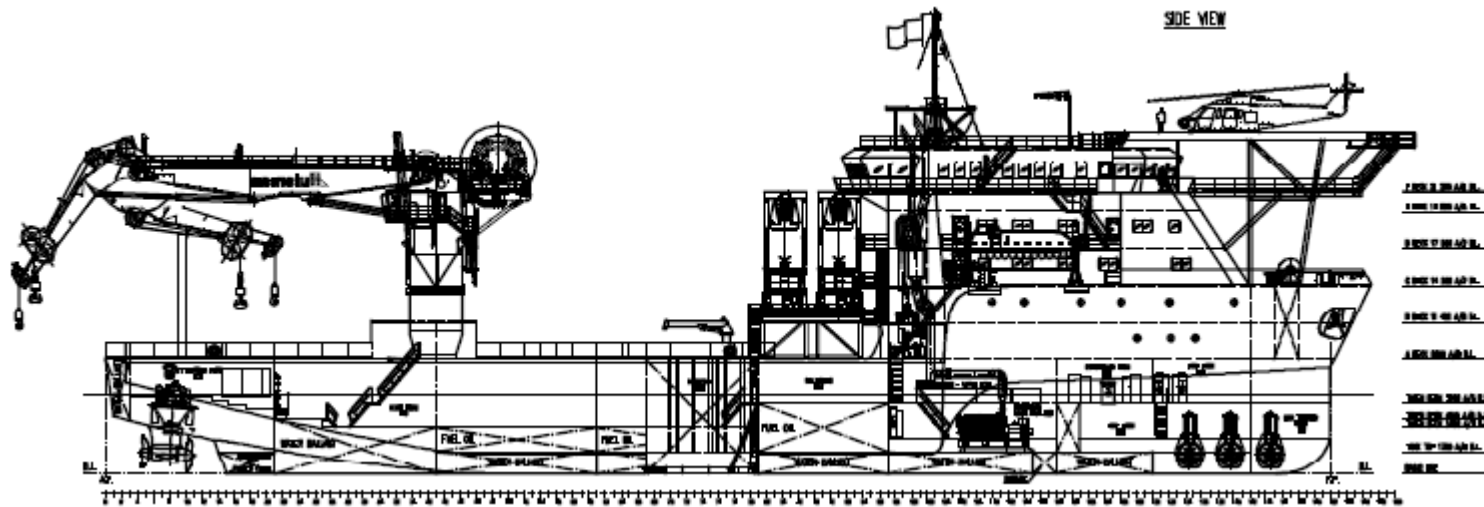
Semi-private ships office located in pilot house.

Comfortable meeting area and helideck staging area

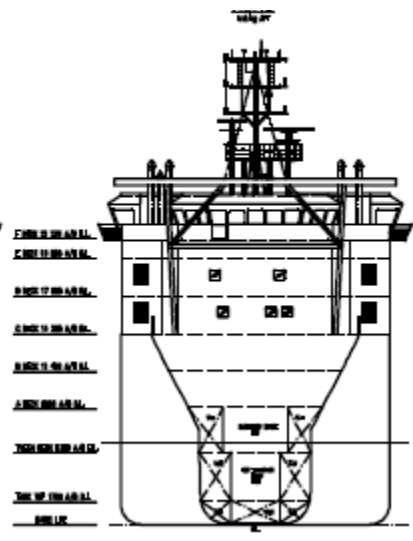
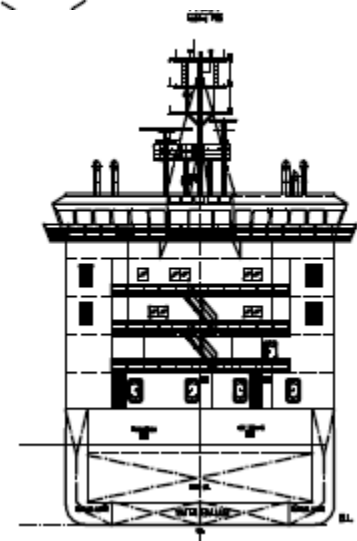
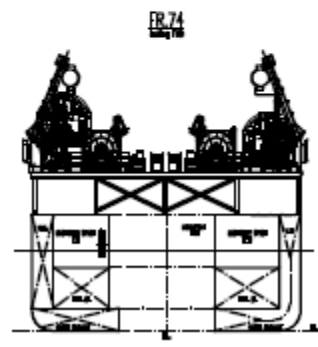
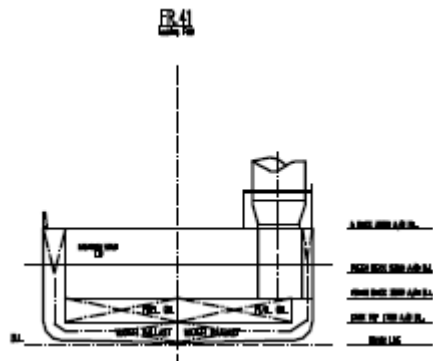
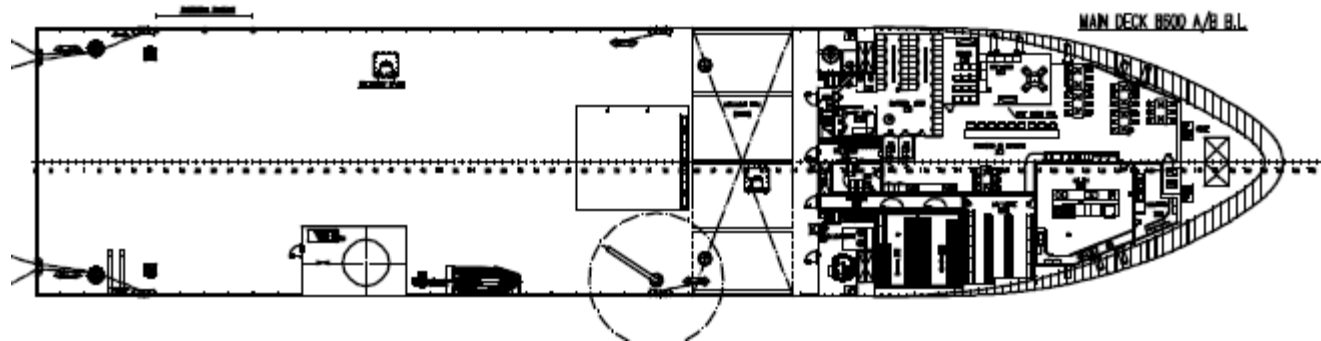
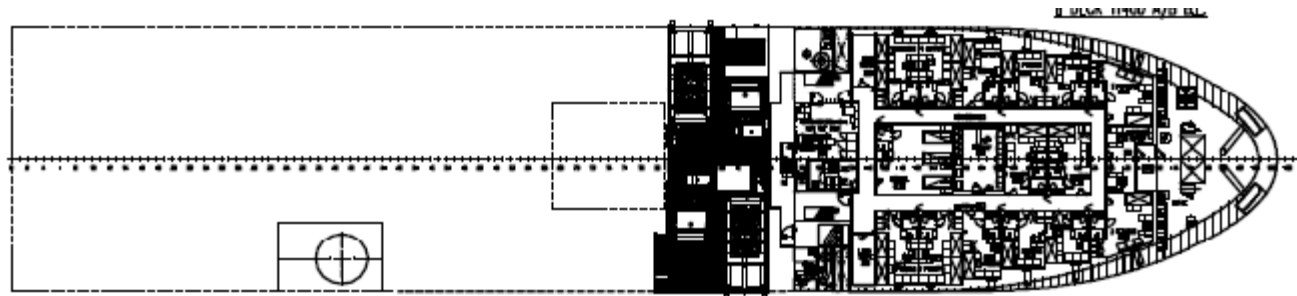
Hospital.....Fully equipped, 6 bed hospital located on C-Deck



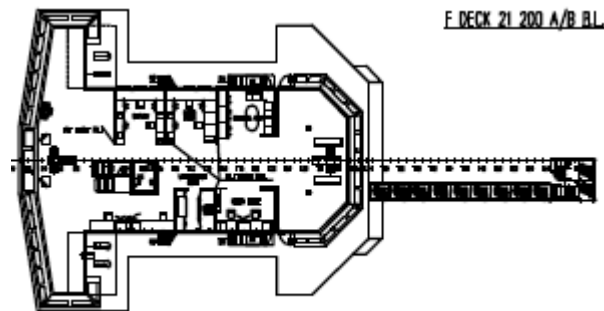
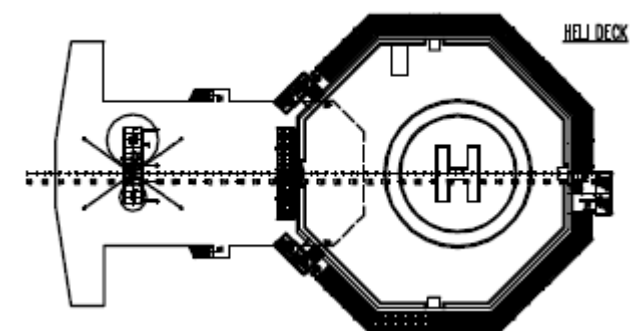
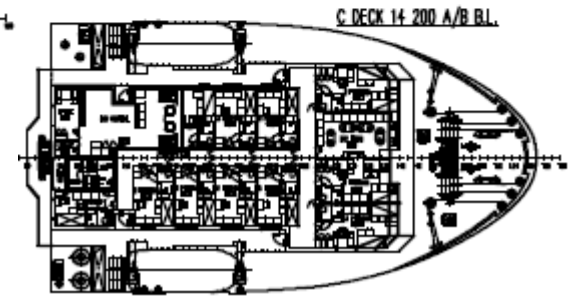
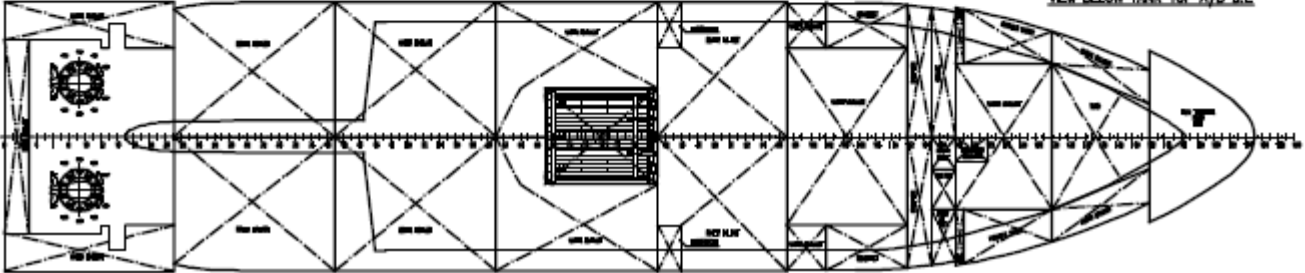
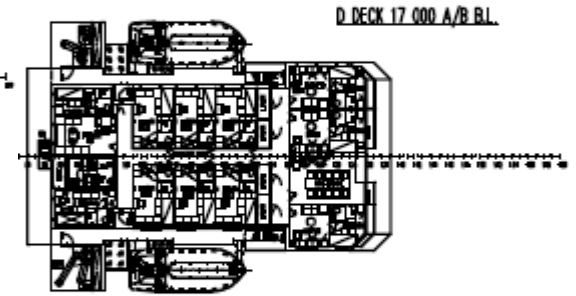
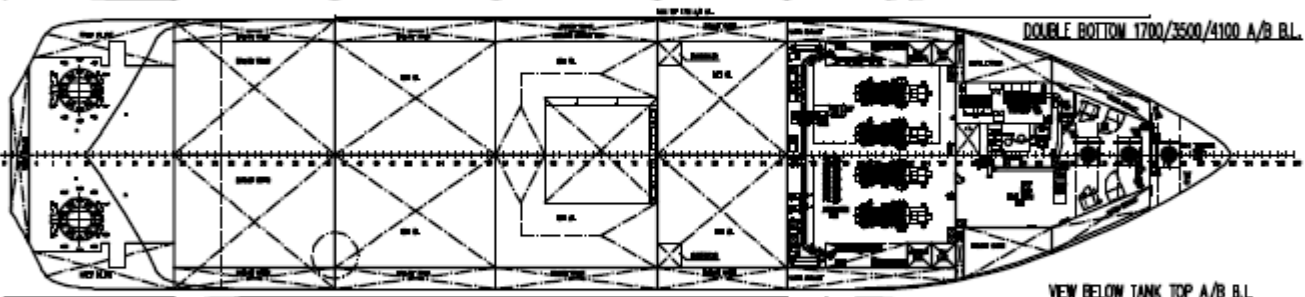
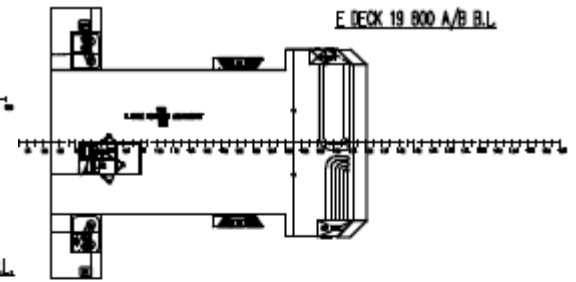
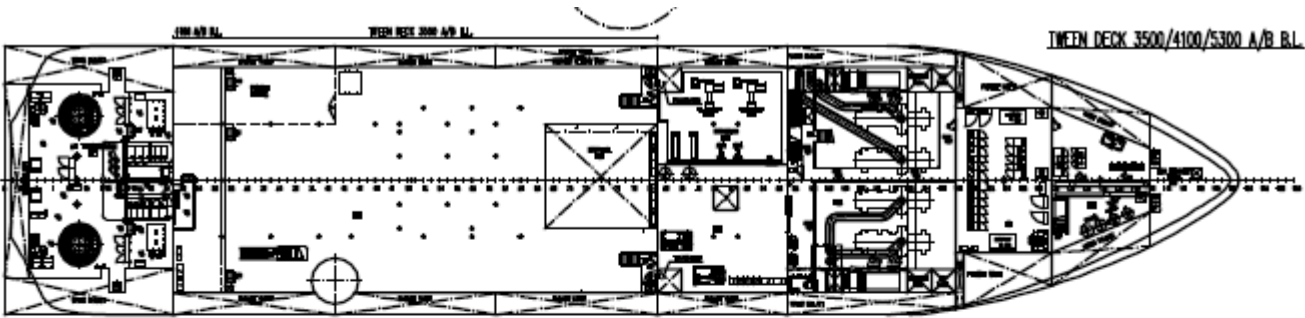
# M/V Cade Candies



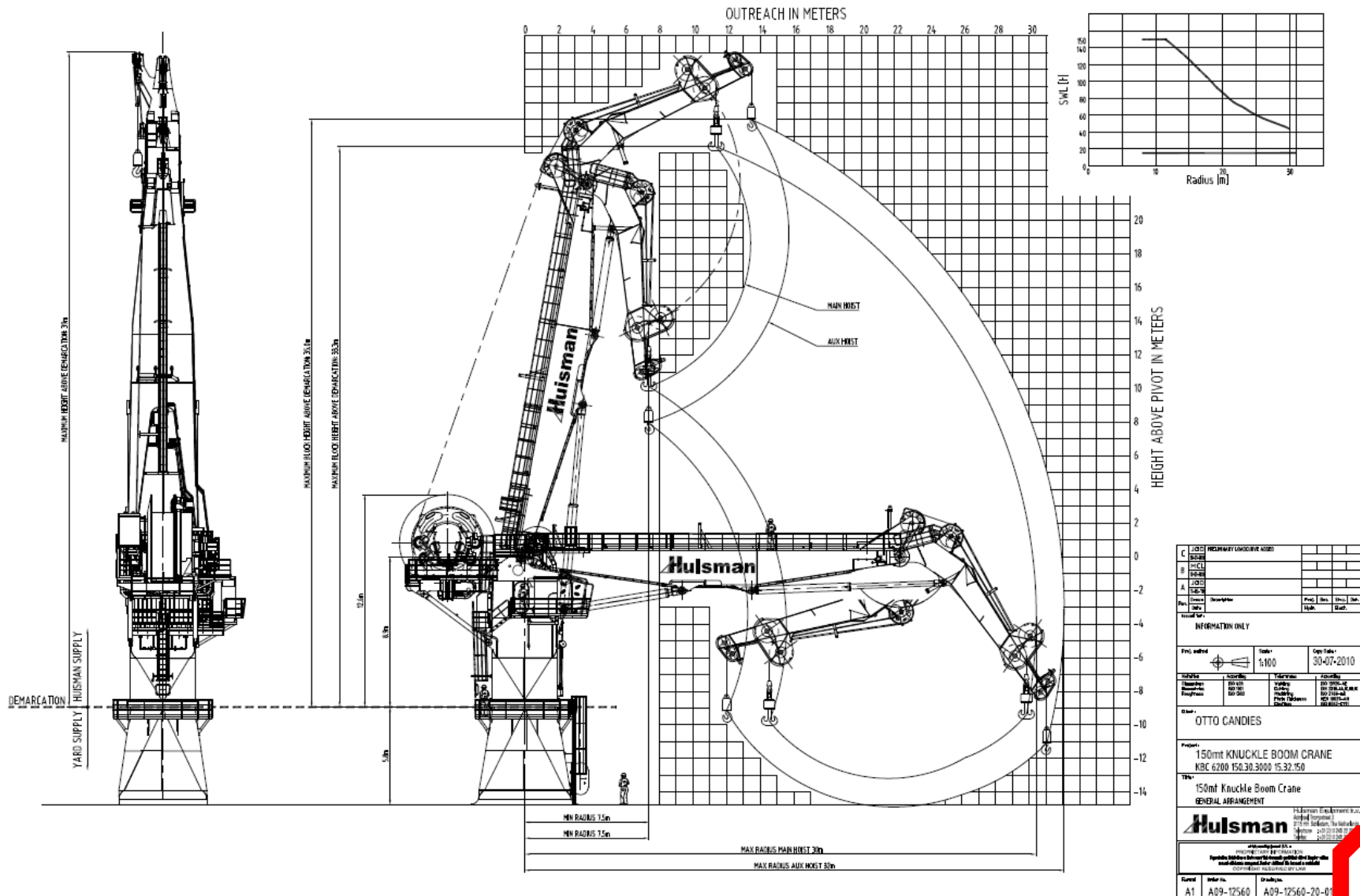
# M/V Cade Candies



# M/V Cade Candies



# M/V Cade Candies





# M/V Cade Candies

---



## Otto Candies, LLC

Post Office Box 25 • Des Allemands, Louisiana 70030-0025 • (504) 469-7700 • Fax: (504) 469-7740 • [www.ottocandies.com](http://www.ottocandies.com)

**Made in the U.S.A.**  
**God Bless America**